



Pueblos y lenguas de América Precolombina:  
Cambio, resistencia y aniquilación (Norteamérica)



Tomás Pérez Suárez  
Centro de Estudios Mayas  
Instituto de Investigaciones Filológicas, UNAM



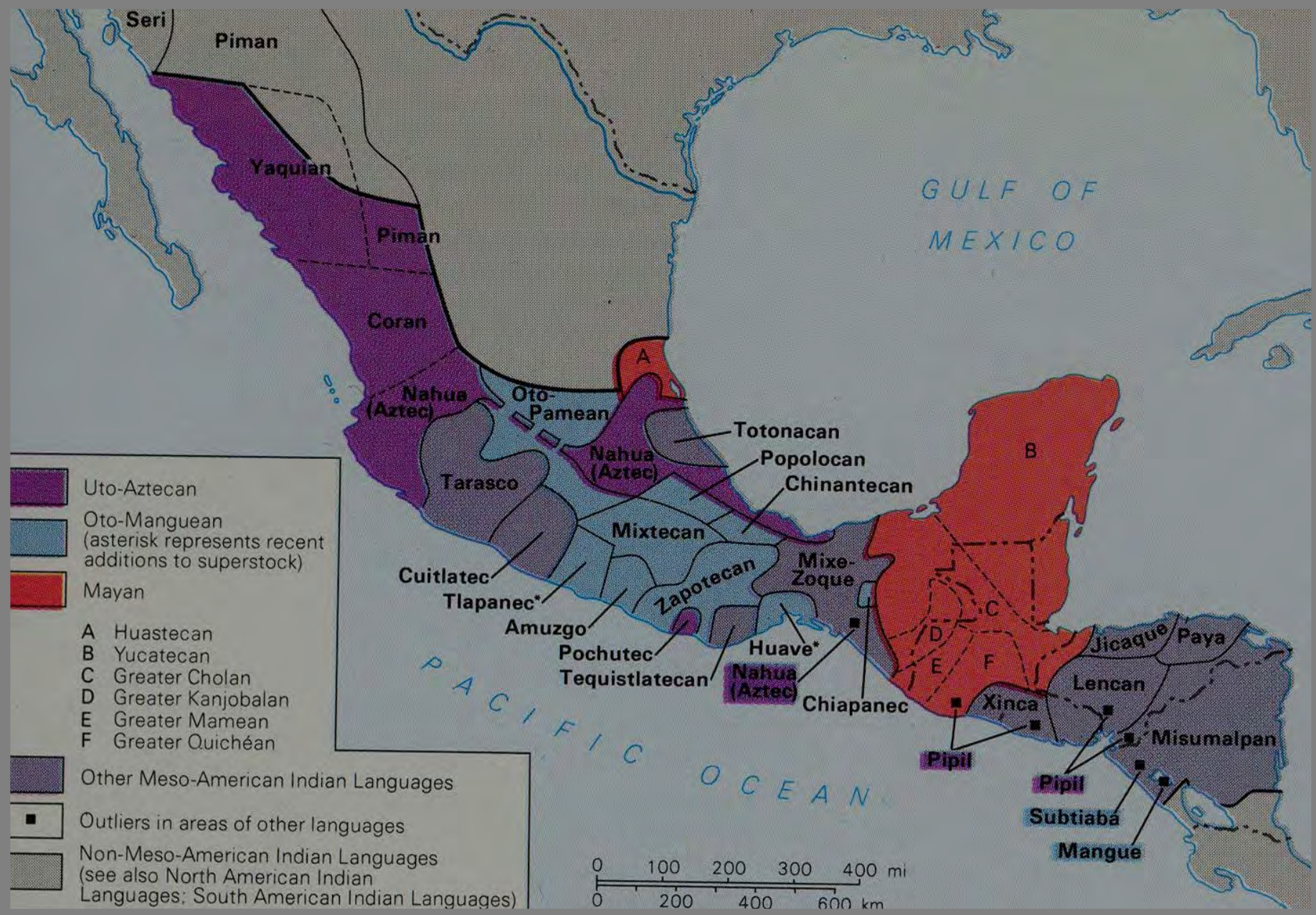




Coloured areas indicate language phyla.  
Names on the map refer to language  
families and isolates (see Table).











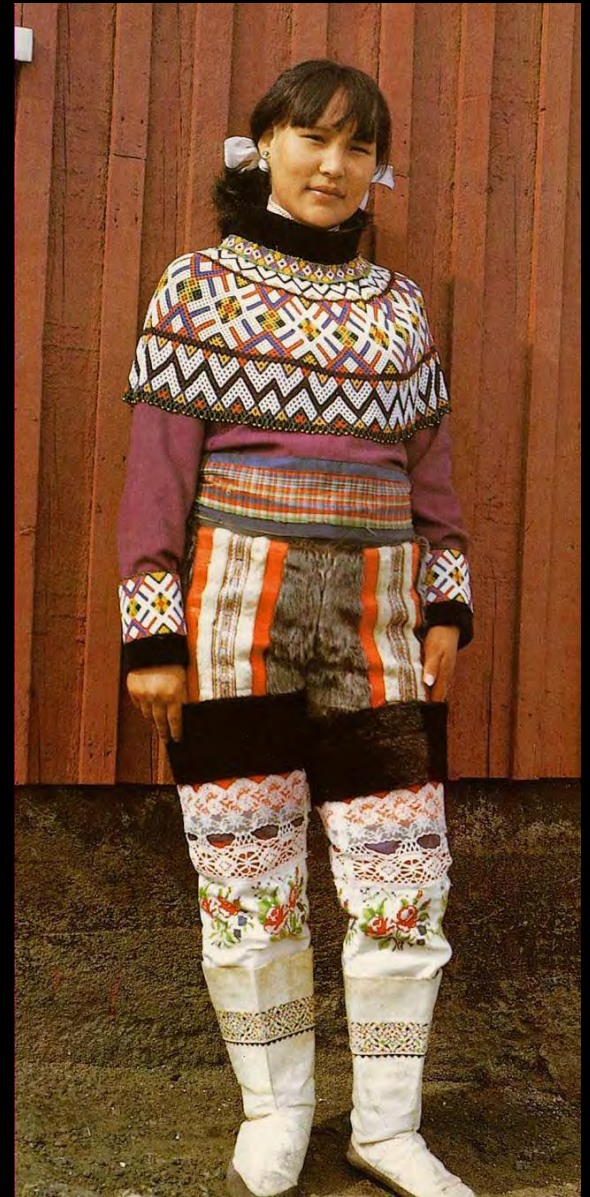


# ETNIAS DE LAS REGIONES CIRCUMPOLARES AMERICANAS



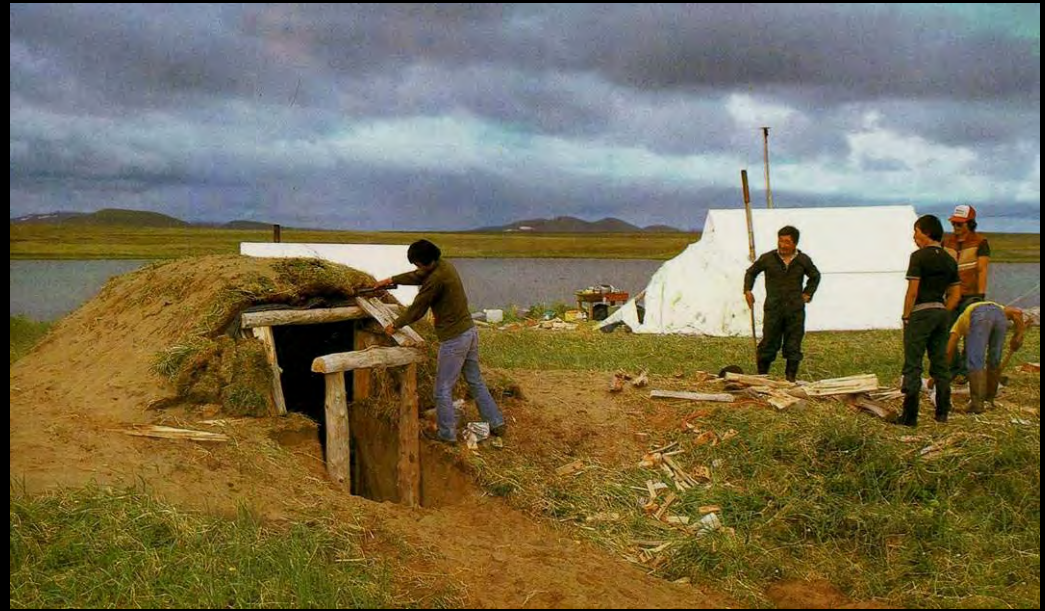
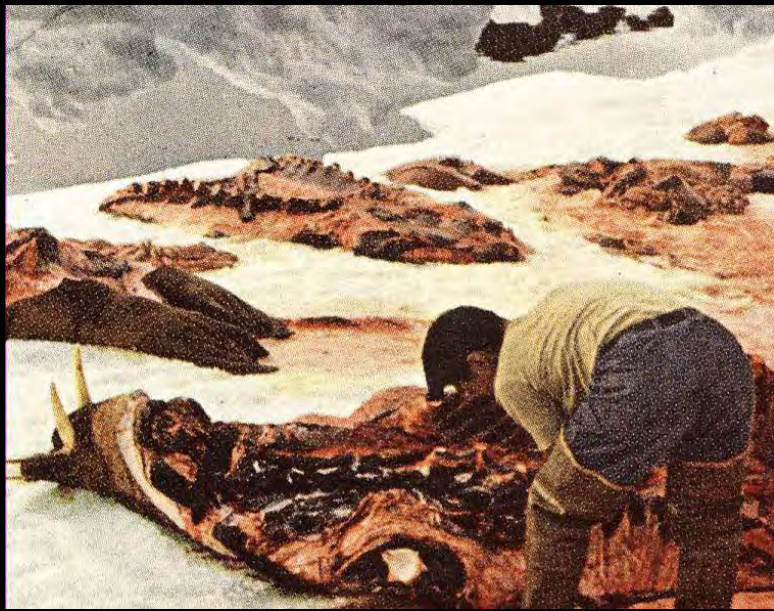
Ártico





Inuit o Eskimal

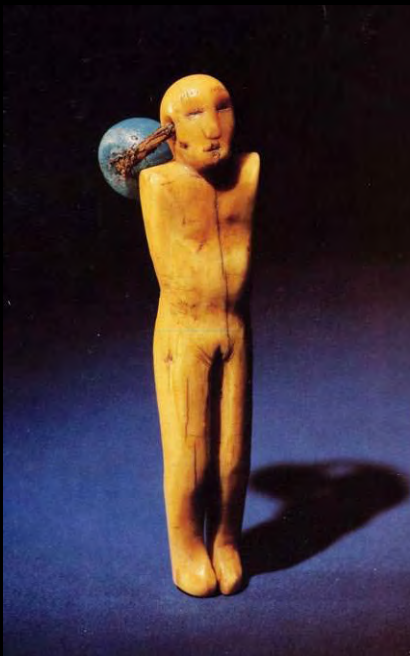
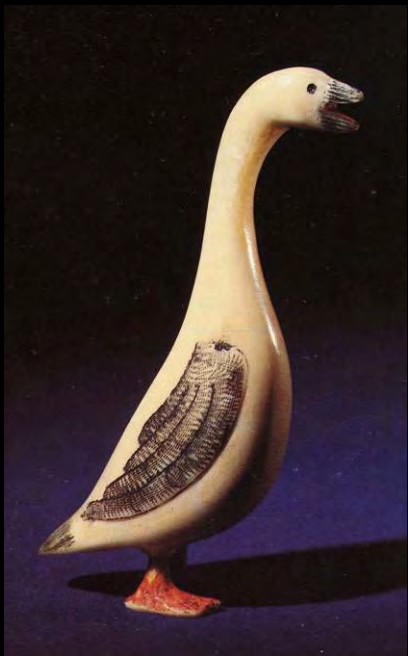
















Aleutianos (Alaska)





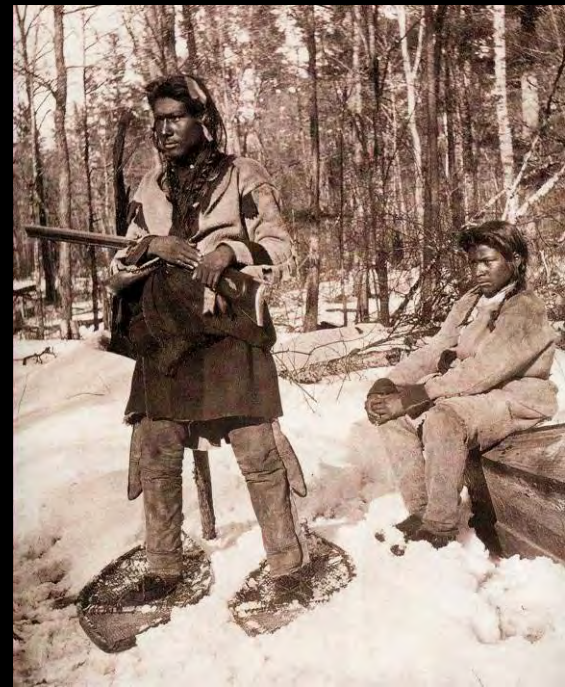


Subártico

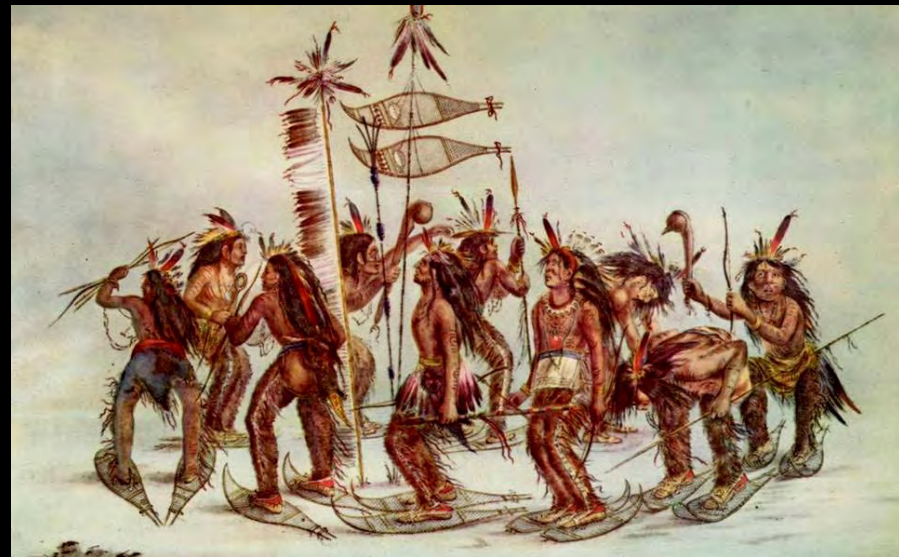




Koutchin (Alaska)



Ojibwa o Chippewa, 1870 (Canadá)







Saulteaux, 1830 (Canadá)



Hare (Canadá)



Tanana, 1884 (Alaska)





Koyukon, 1869 (Alaska)



Cree, 1821 (Canadá)



Dogrib, 1898 (Canadá)



Montagnais, 1861 (Canadá)



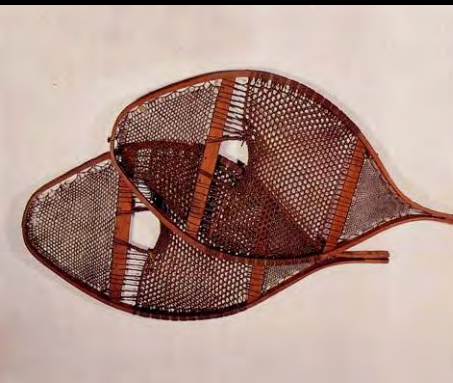


Cree (Canadá)



Carrier (Alaska)



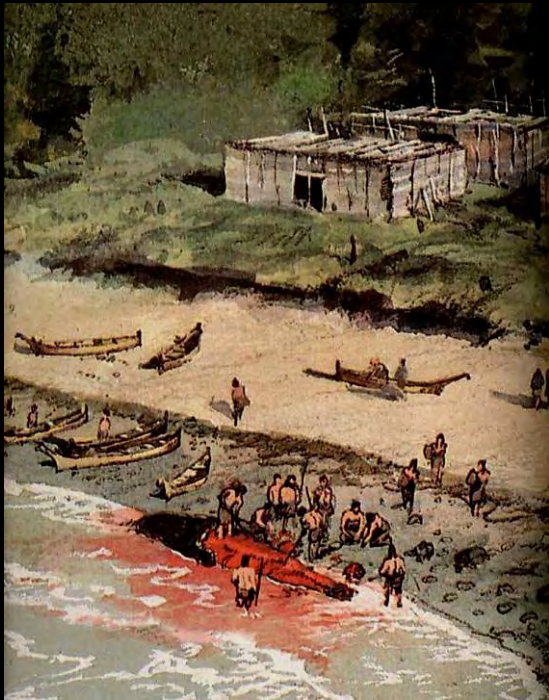
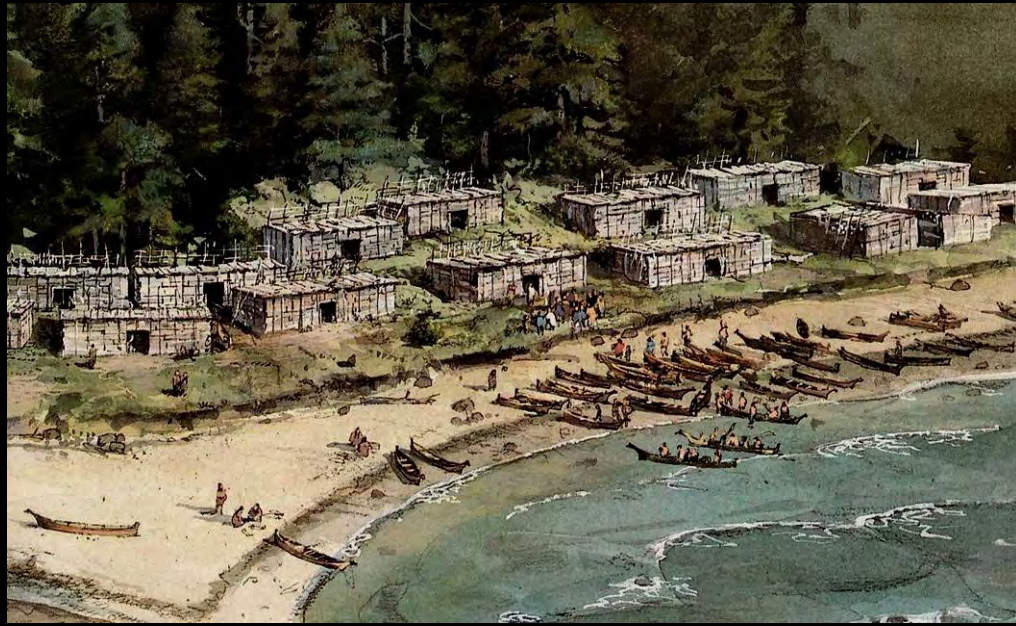




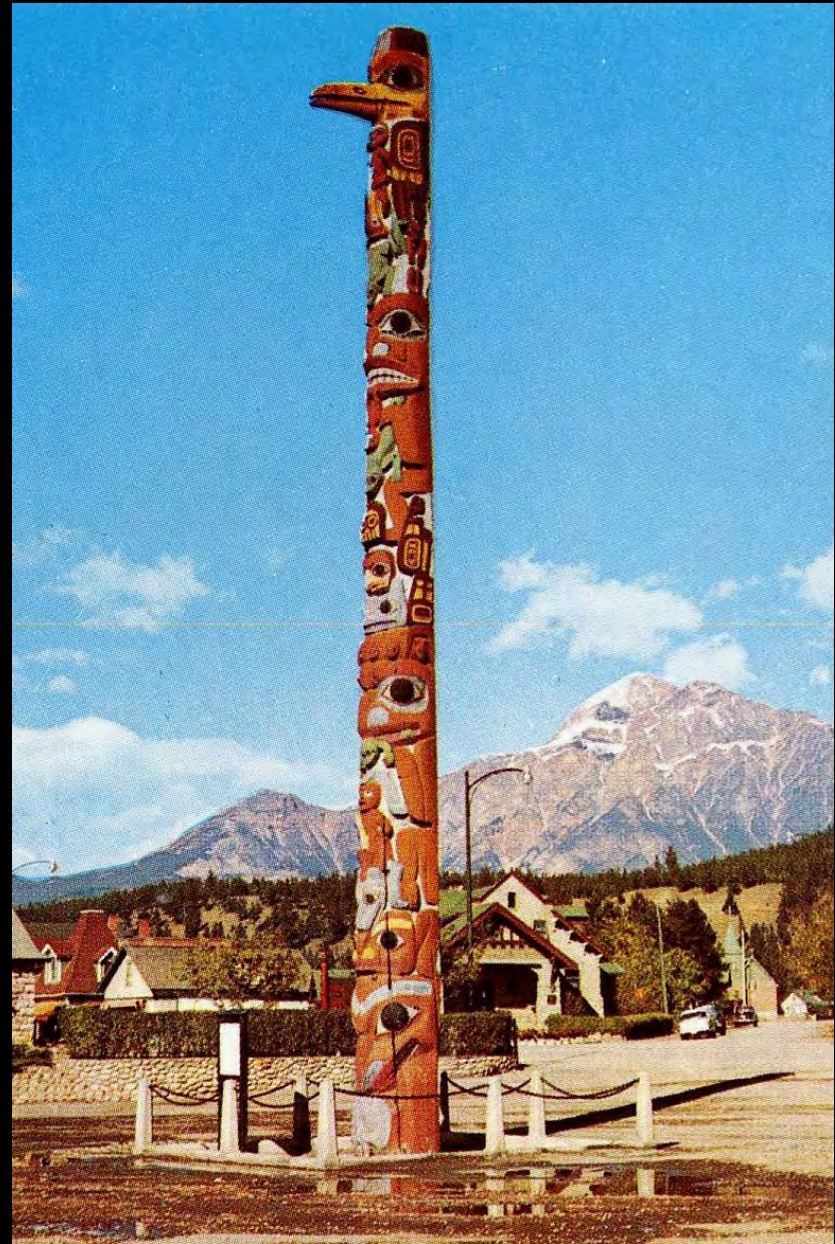


Costa Noroccidentale













Kwakiutl (1880)



Haida (S. XIX)



Kwakiutl (1899)



Bella Coola (1881)





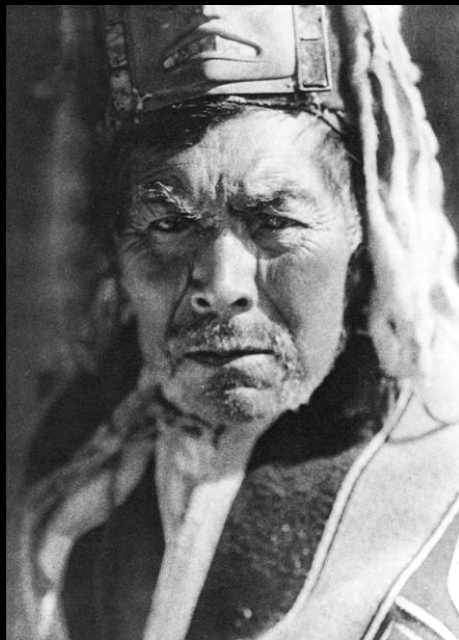
Tlingit (1900)



Tlingit (1906)



Tsimshian (1927)



Haida (1915)



Nookta (1915)



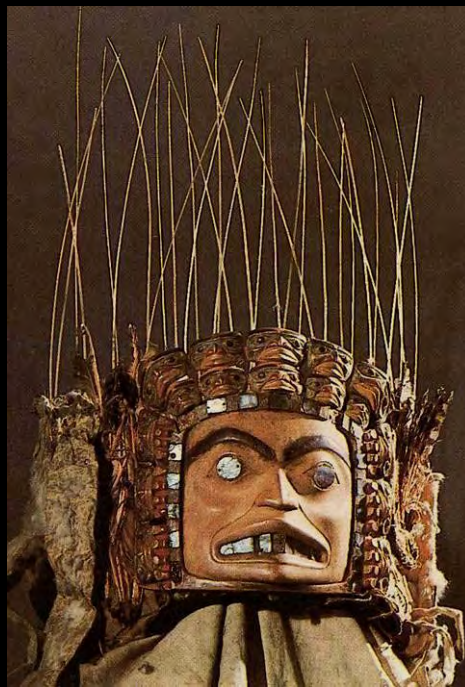
Salish (1912)





Kwakiult









Kwakiult (1914)









## Bosques del Este







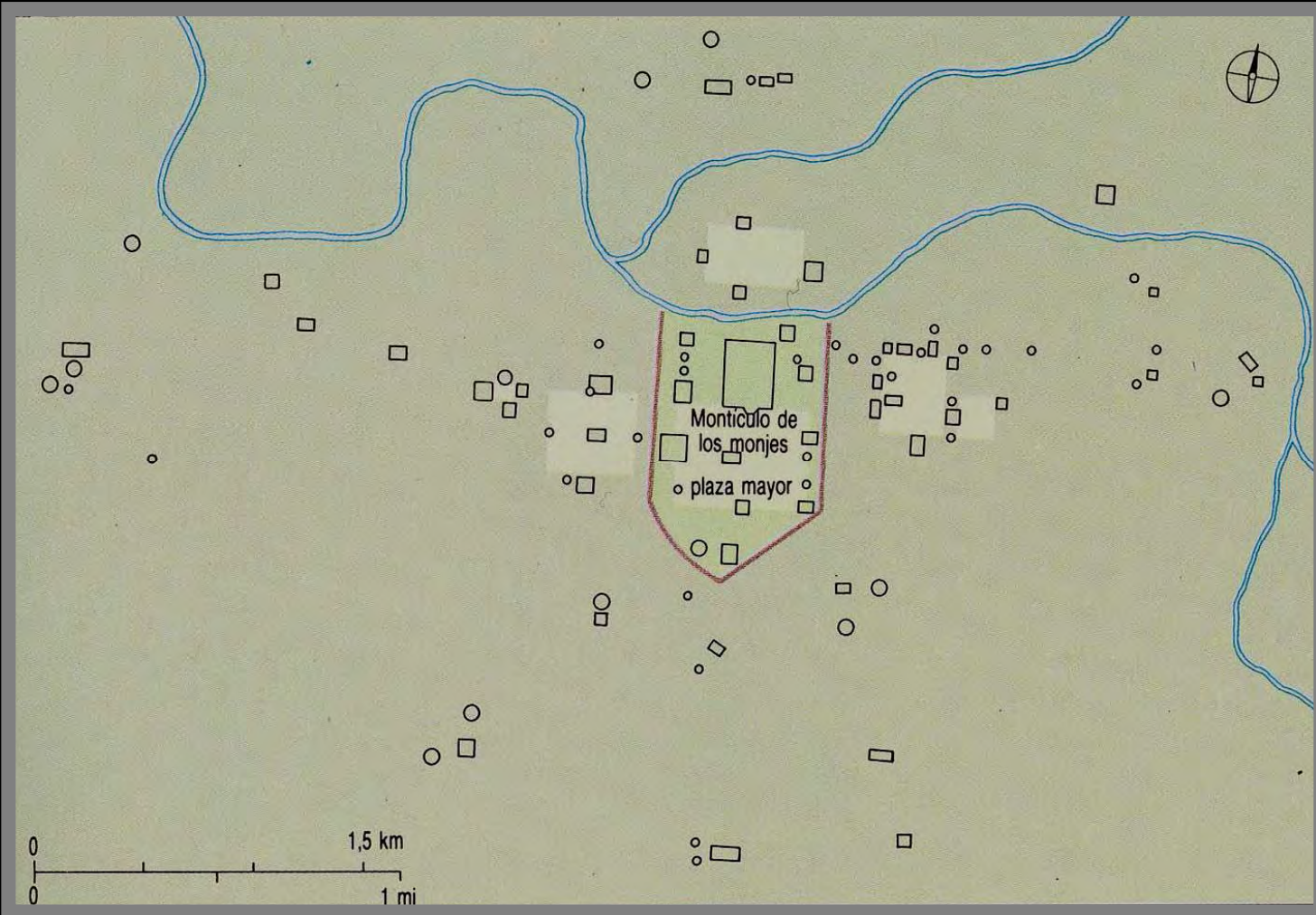
Mound City, Ohio

Culturas Adena y Hopewell  
(700 a.C. – 600 d.C.)

Serpent Mound, Ohio

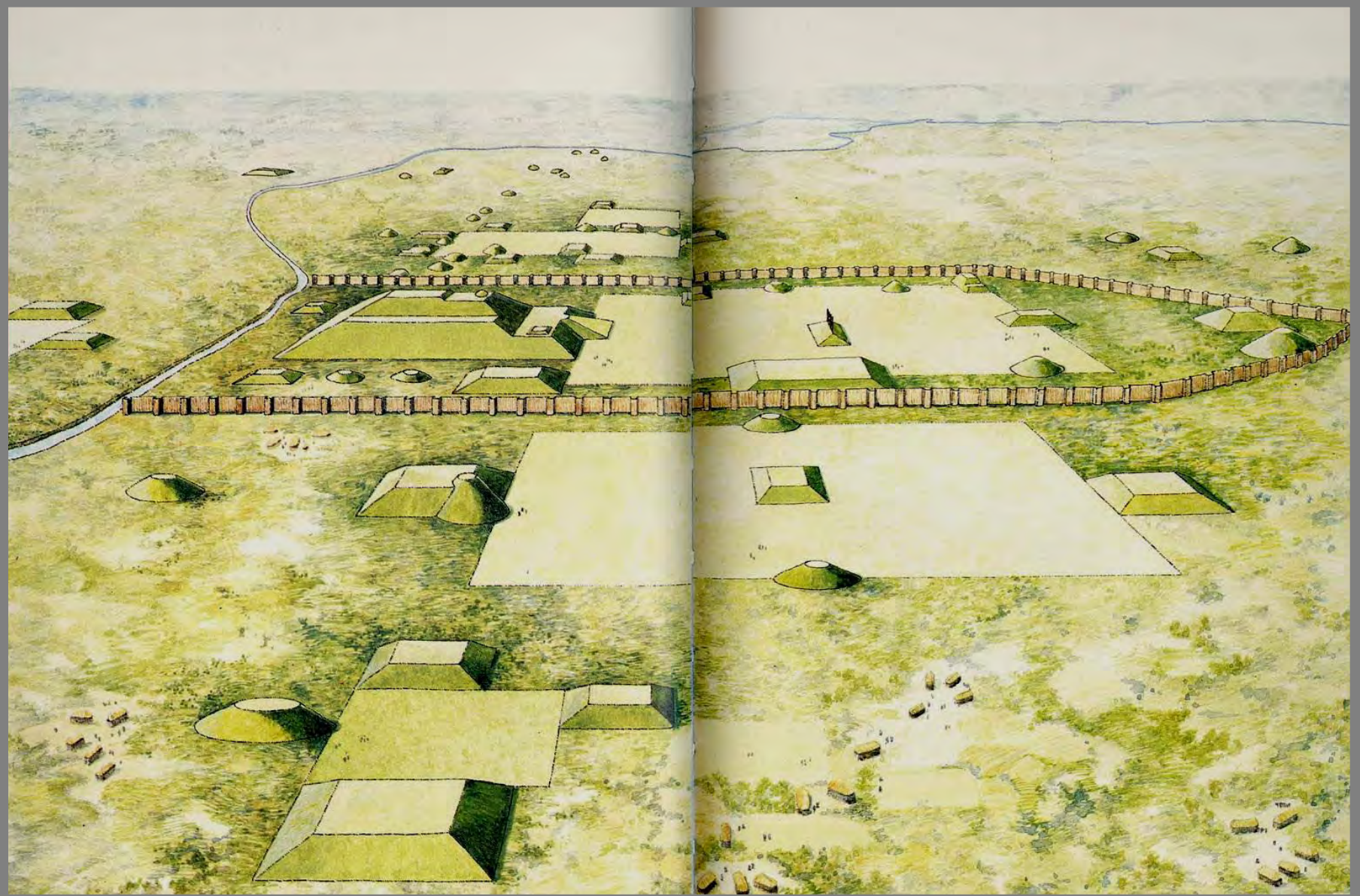






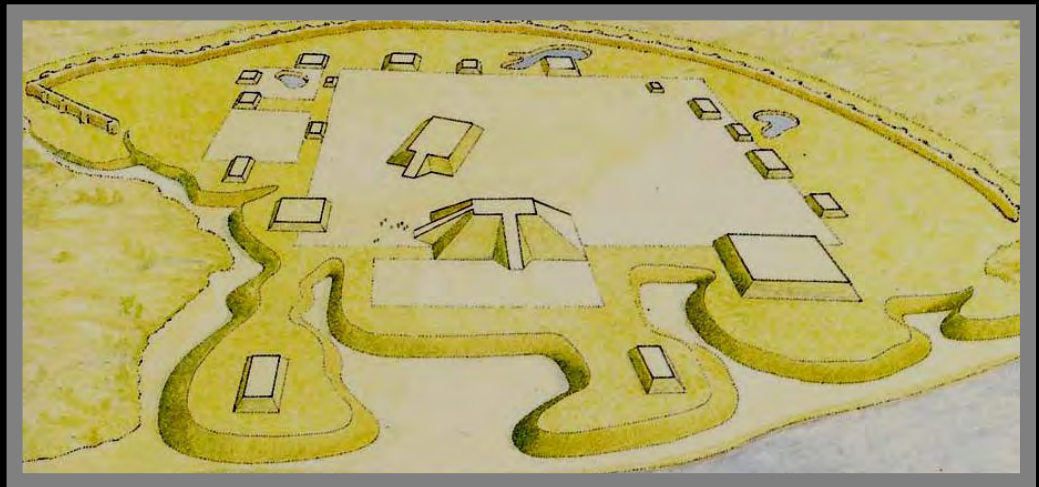
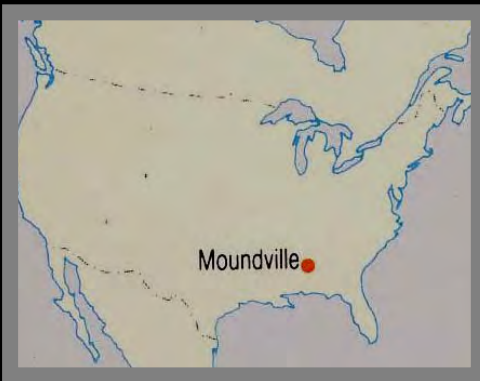
Kahokia (Illinois)  
Cultura Mississippi (900 - 1 300 d.C.)





Kahokia (Illinois)



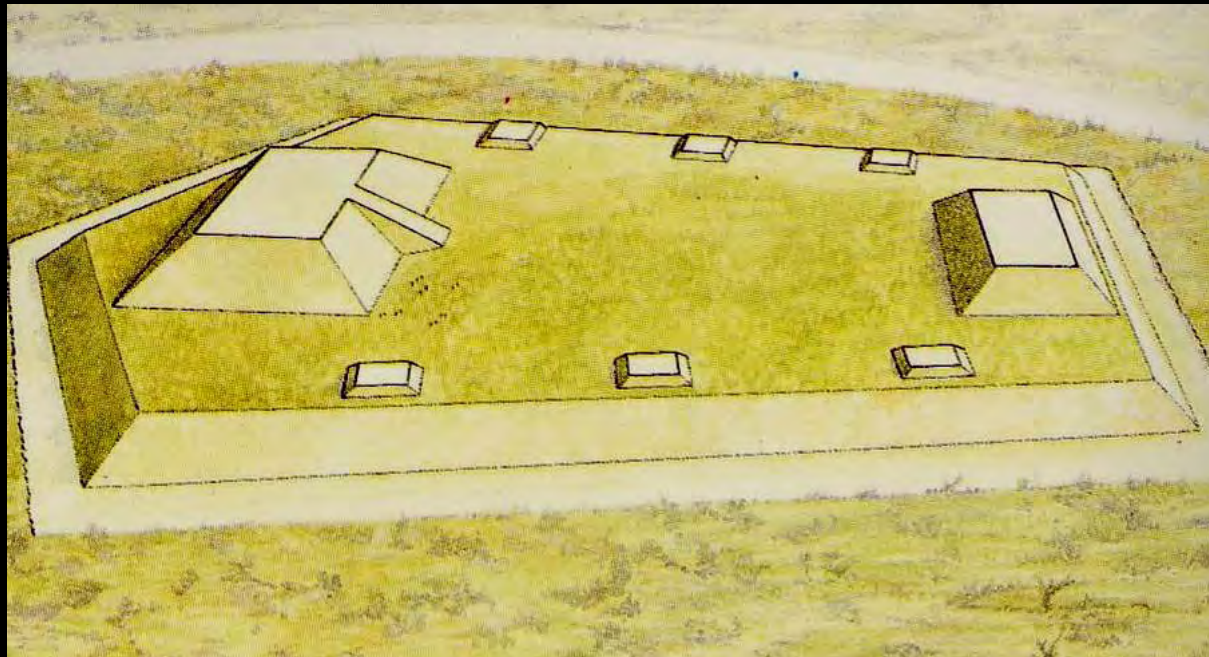


Moundville, Alabama





Esmerald Mound, Mississippi



Town Creek Mound, North Carolina



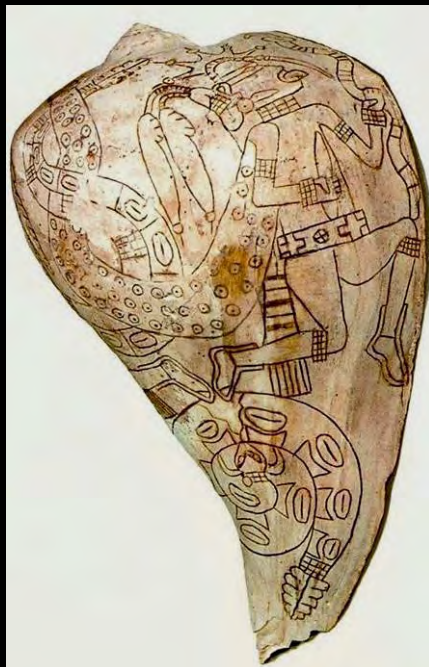
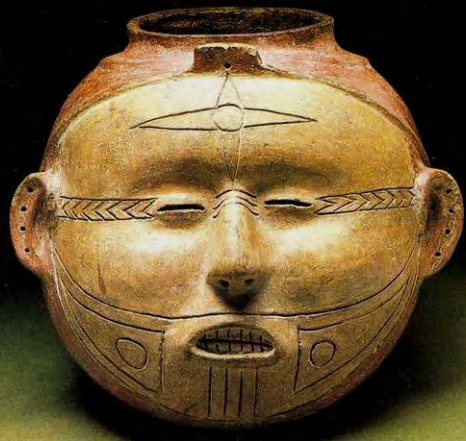
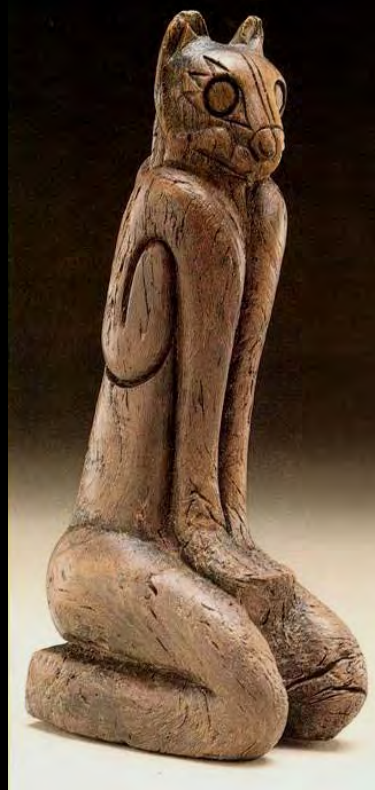


Etowah, Georgia

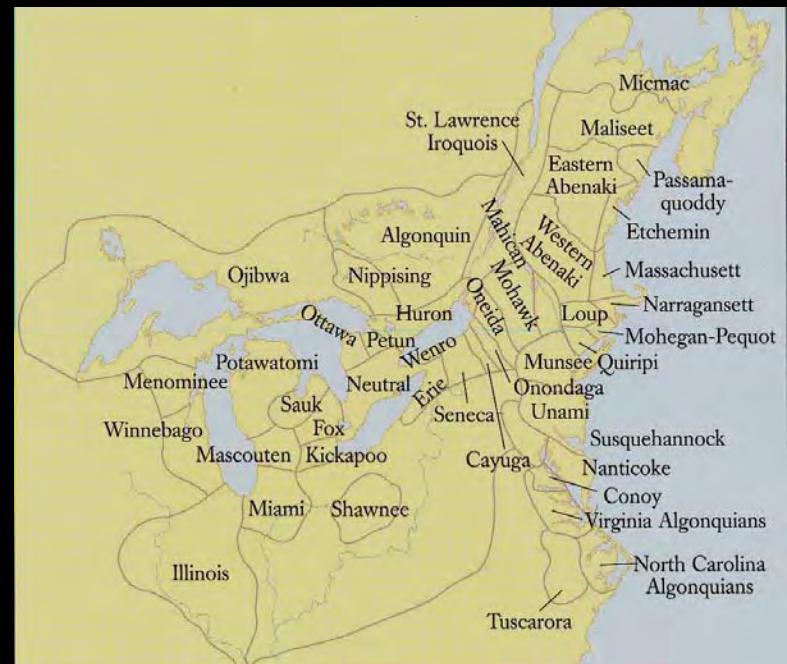




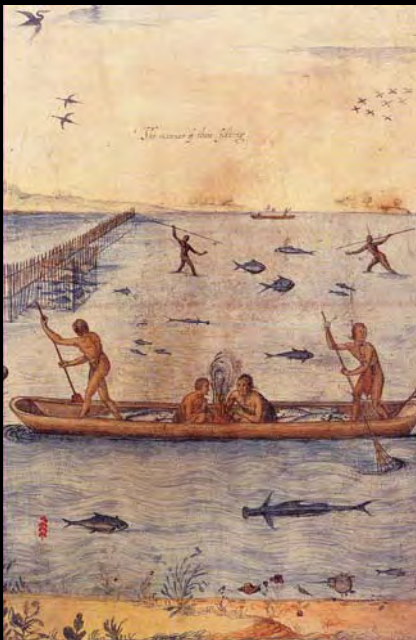












Algonkino (1586)



Timucua (1588)



Tunica (1732)



Creek (1824)

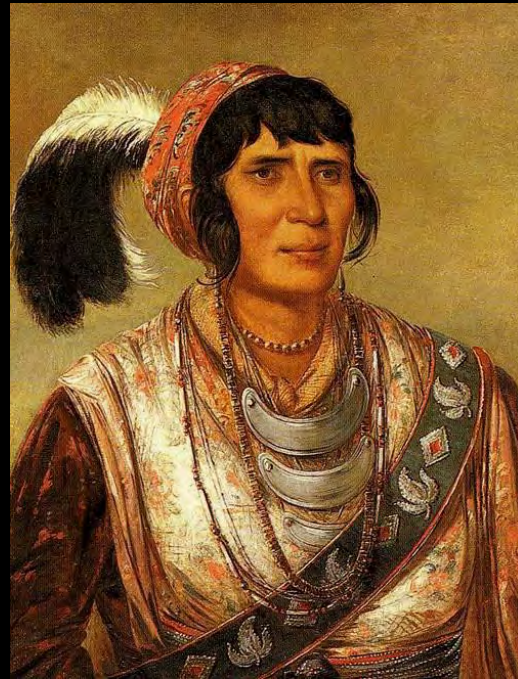


Yuchi (1847)



Choctaw (1869)





Seminola (Florida)





Algonquino (1586)

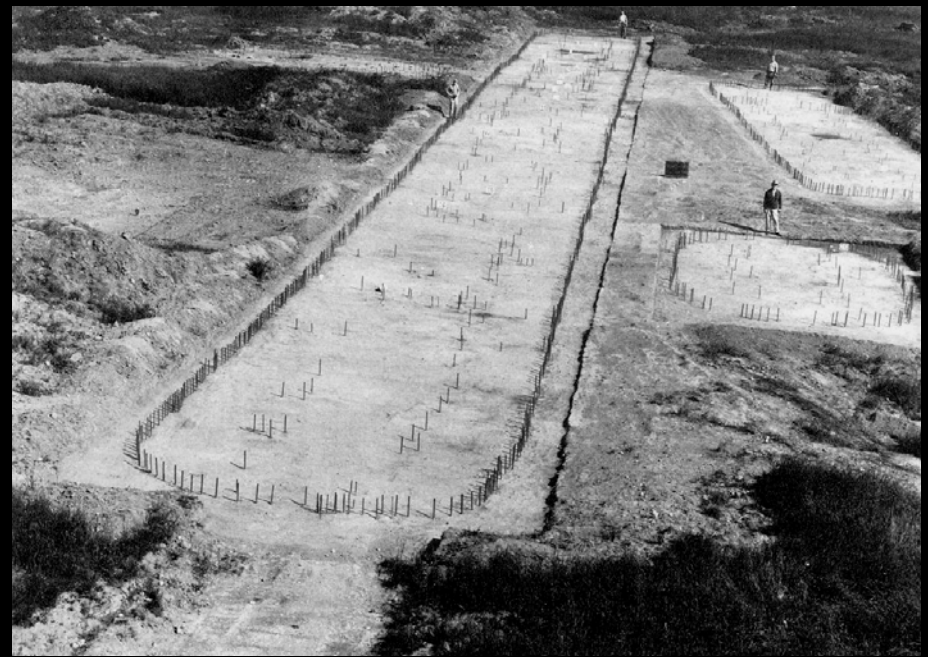


Ojibwa (1845)



Micmac (1830)





Howlett Hill (N. Y.)

Iroques y Huron



Otstungo (N. Y.)



Rayni River (Ontario)

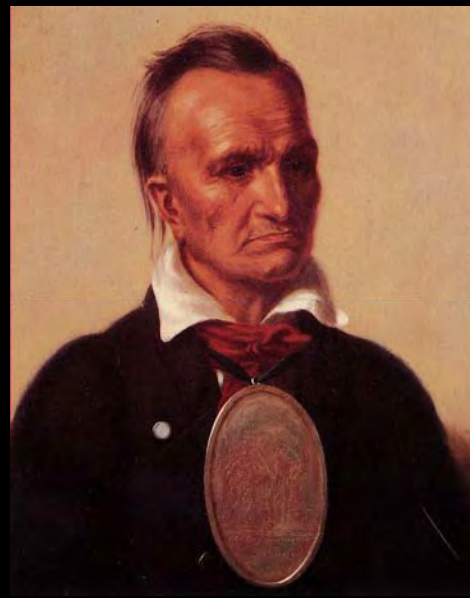




Delaware (1735)



Narrangansett (S. XVIII)



Seneca (1792)



Huron (S. XVIII)



Shawnee (1830)



Sauk (1832)



Onondaga (1847)



Menominee (1858)





Fox (1890)



Kikapoo (1966)



Micmac (1978)

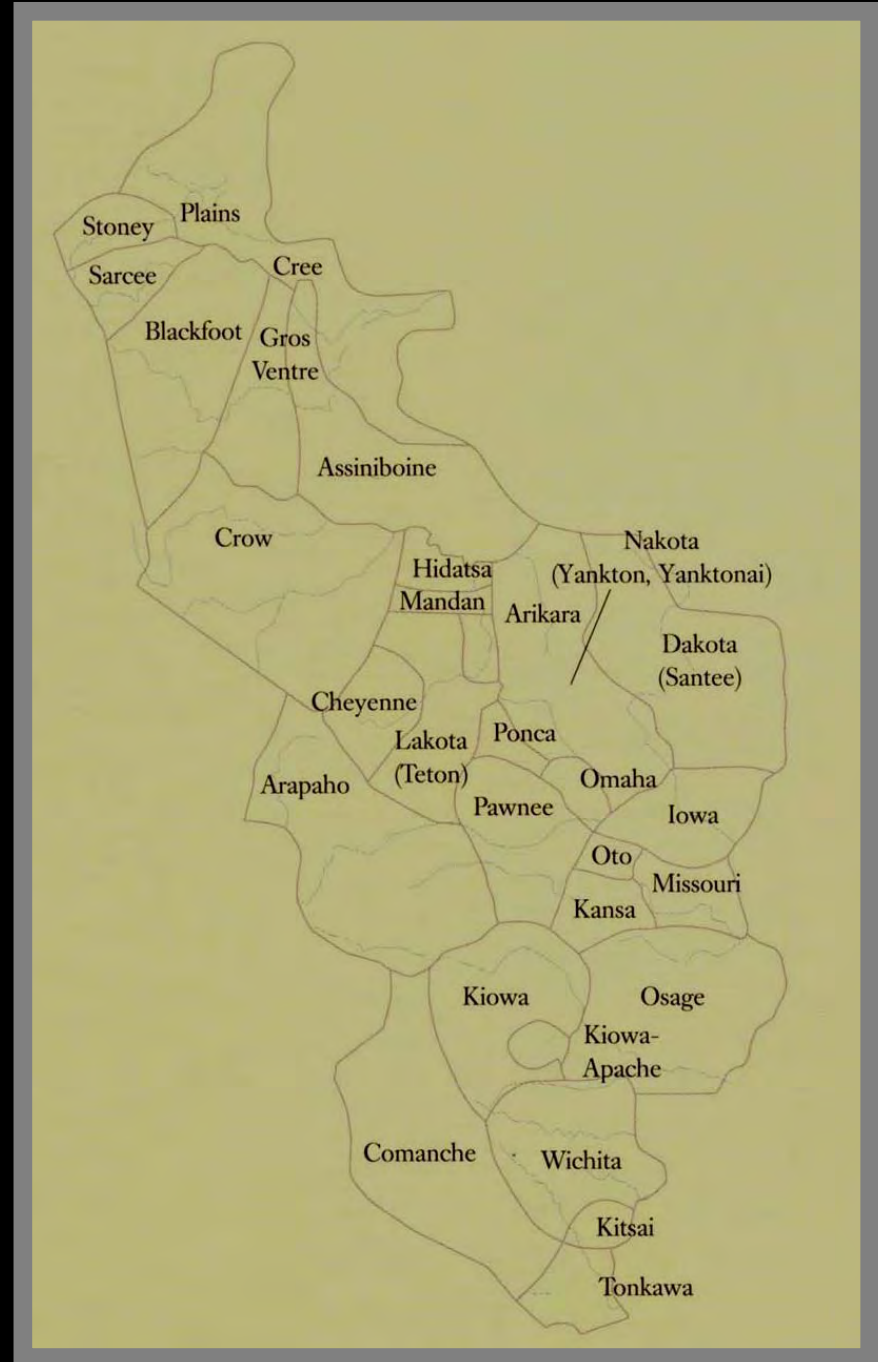
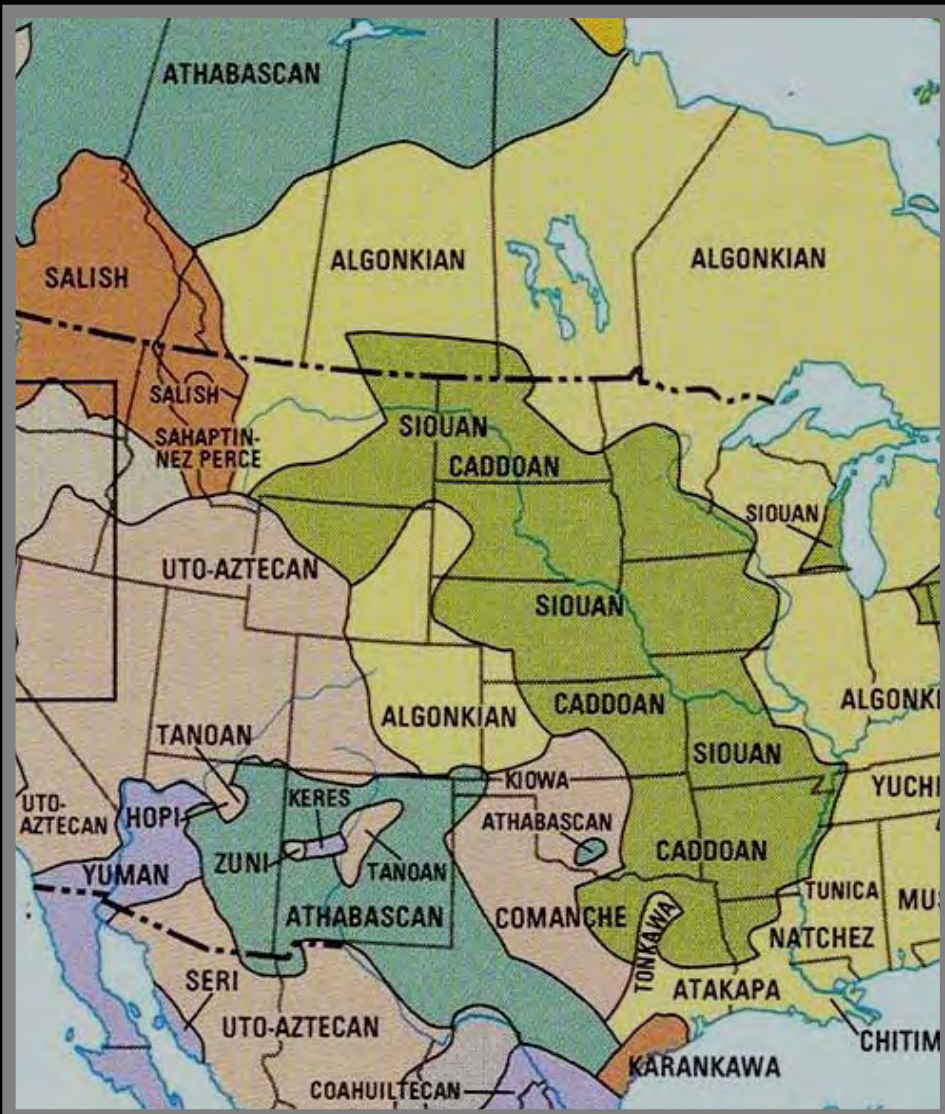




## Praderas y Planicies



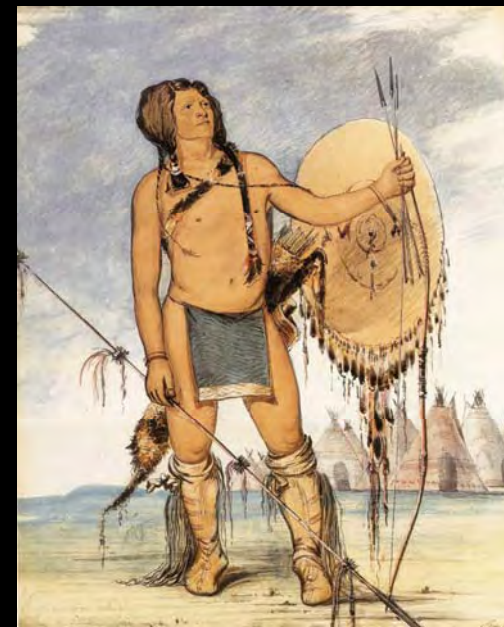
















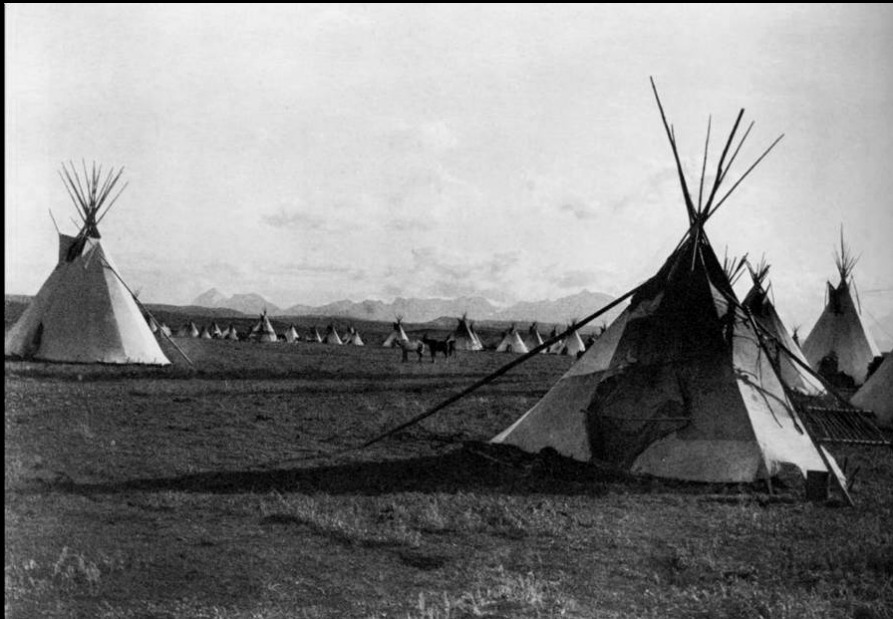




Blackfoot (1926)



Assiniboine (1926)



Piegan (1900)



Stoney (1985)





Dakota (1880)



Osage (1902)



Lakota (1908)



Assiniboine (1908)



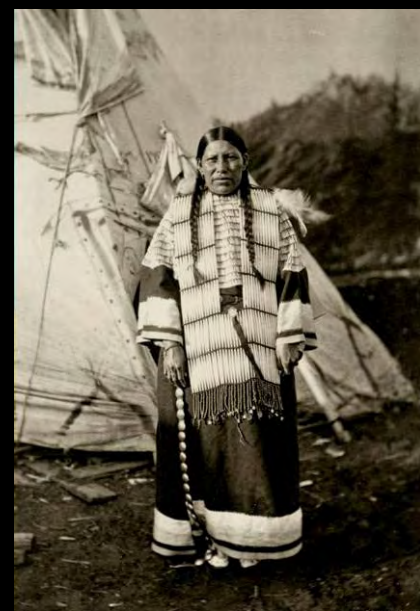
Arikara (1908)



Asparoke (1908)



Oto (1908)



Siux (1908)





Cheyenne (1910)



Blackfoot (1908)



Blackfoot (1924)



Cheyenne (1910)



Kiowa (1900)



Comanche (1868)



Apache (1870)





Crow



Assiniboine



Cheyene



Siux



Stoney



Shoshone



Winnebago



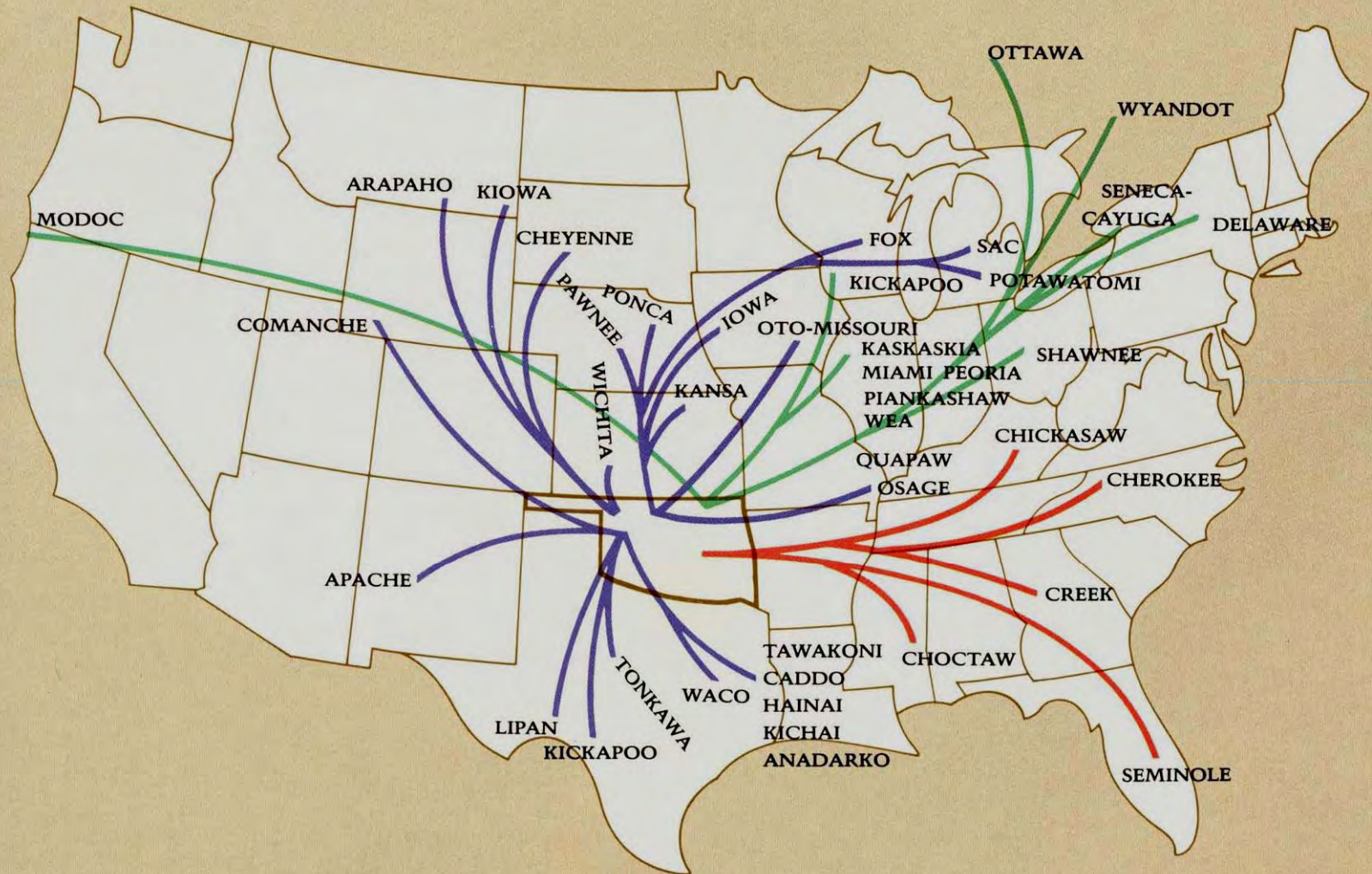
Crow



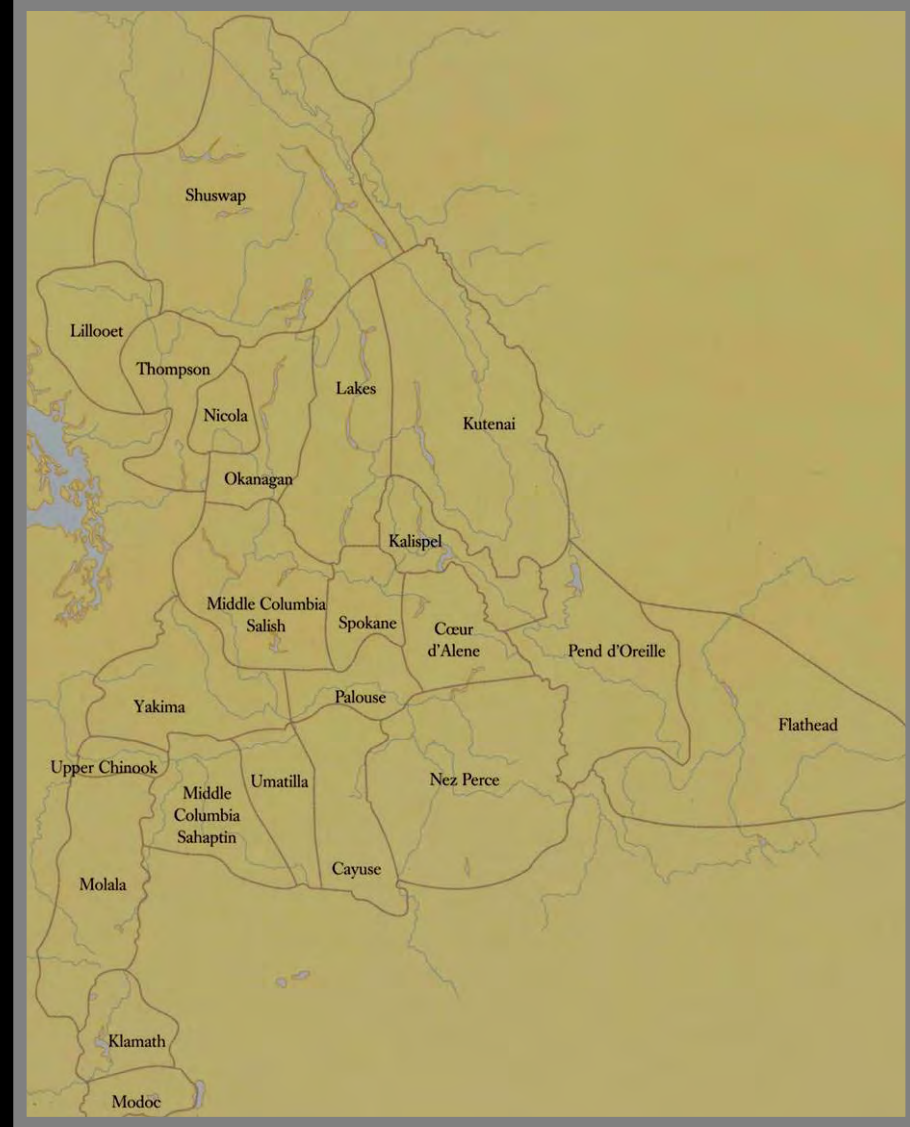




## *Movement of Indian Tribes into Oklahoma*







Altiplano

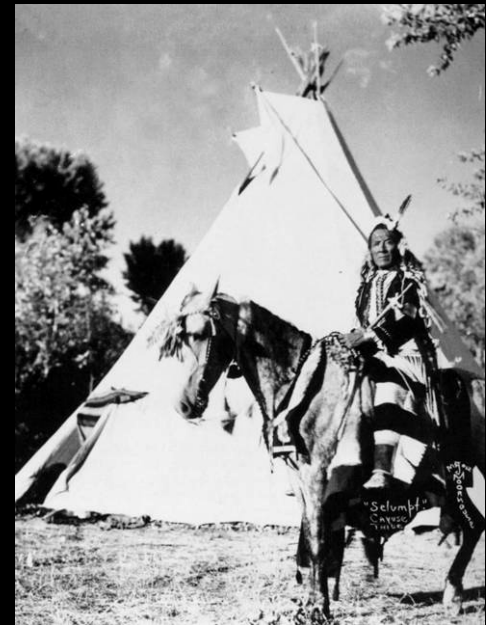




Spokane (1847)



Umatilla (1889)



Cayuse (1905)



Nez Perce (1837)



Wishram (1911)



Lillooet (1978)



Yakima (1987)





Gran Cuenca





Moapa



Bannock



Shoshone



Ute



Paiute (1875)





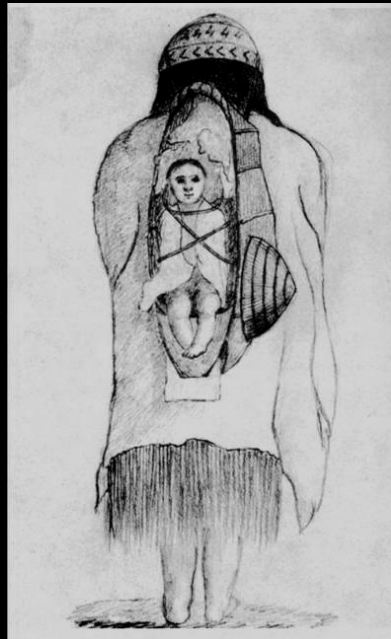
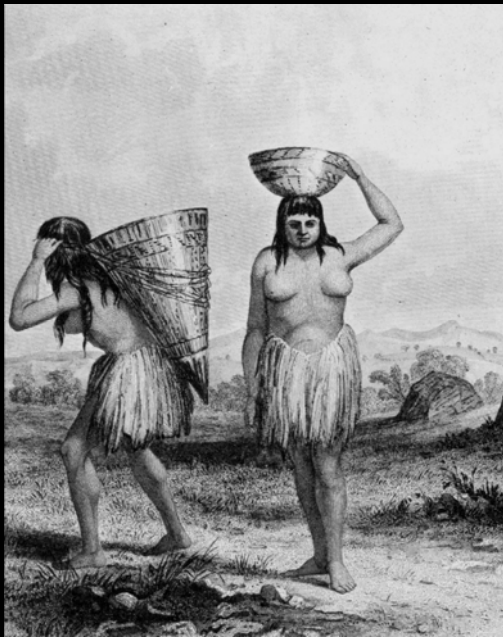
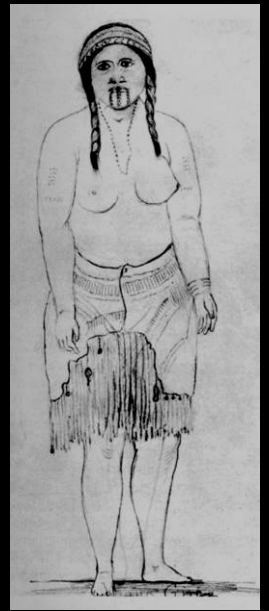
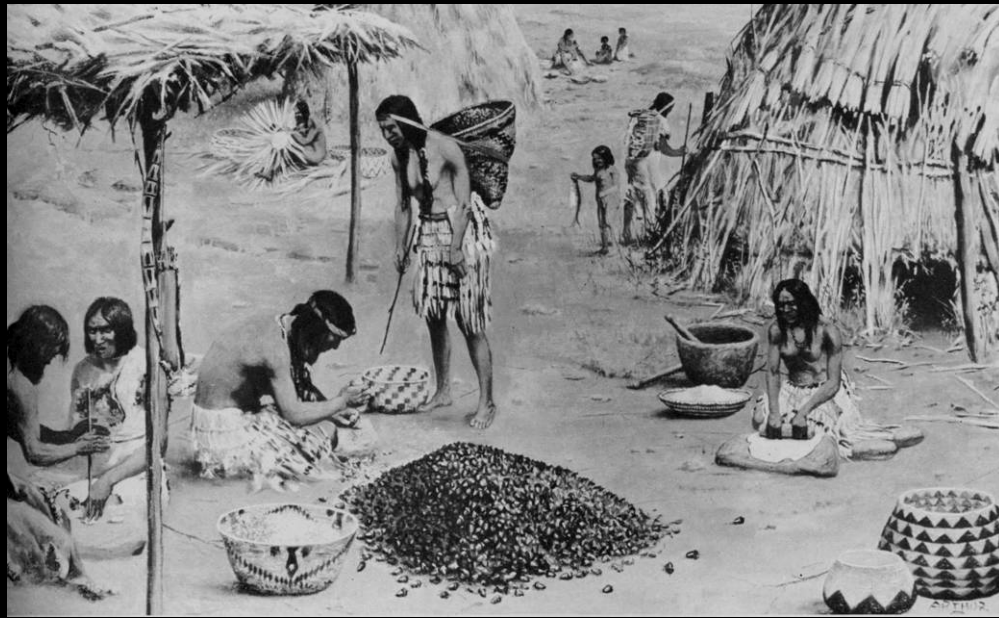
## California















Pomo (1903)



Hupa (1923)



Karok (1893)



Yokut (1903)



Luiseño (1904)



Karok (1898)





Pomo



Pomo



Miwok (1933)



Yokut (1900)



Hupa



Chinok (1856)





Hupa (1890-1900)



Yahi (Ishi, 1852-1916)



Pomo (1906)



Pomo (1980)





Pomo



Yokut



Mono



Pomo



Miwok



Pomo













Cañón del Chaco, Nuevo Mexico

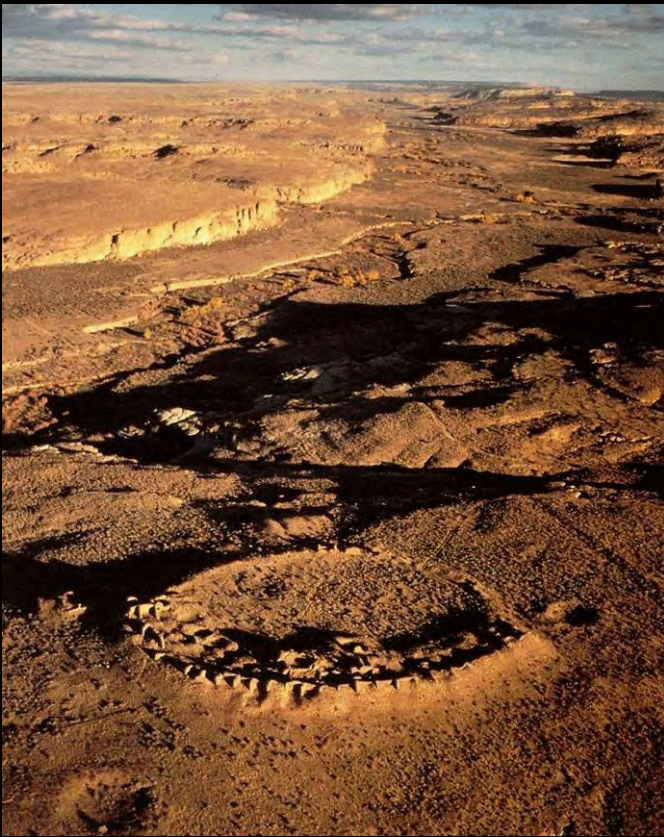


Pueblo Bonito



Chetro Ketl





Peñasco Blanco



Pueblo Bonito

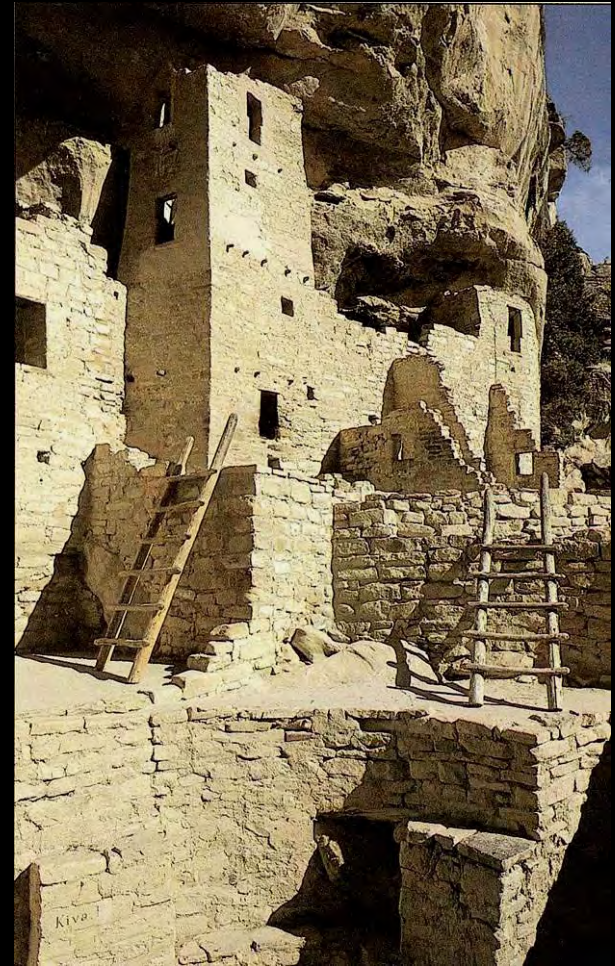
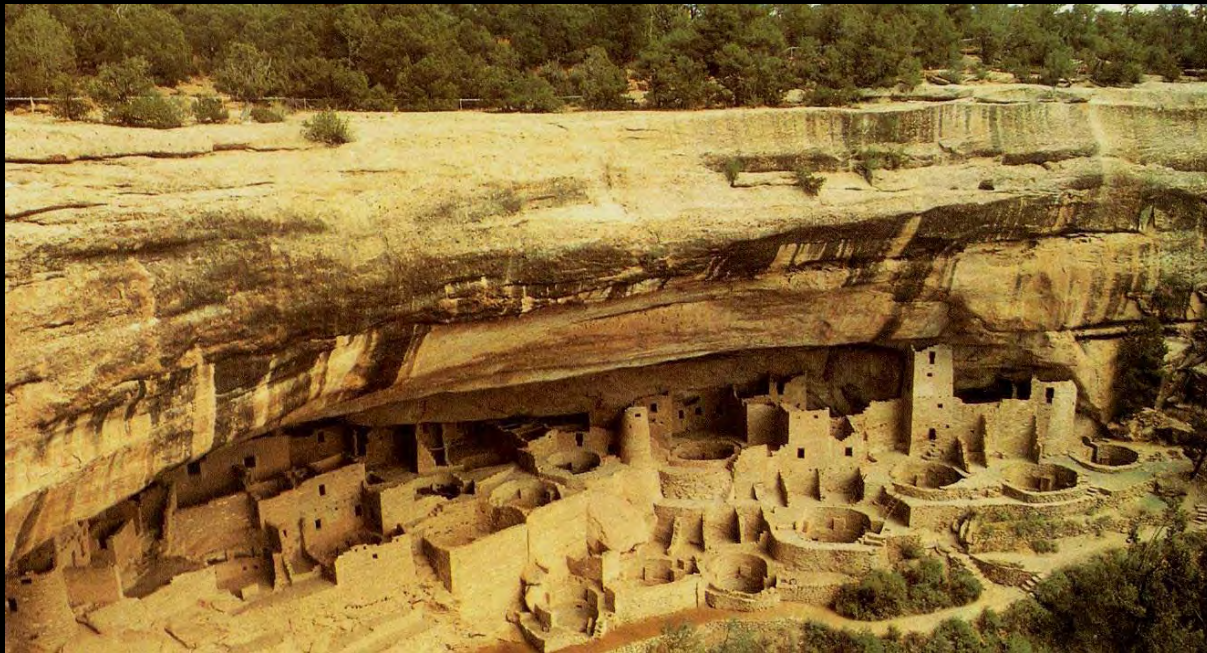


Kiva Rinconada





Mesa Verde, Colorado



Cliff Palace, Nuevo Mexico

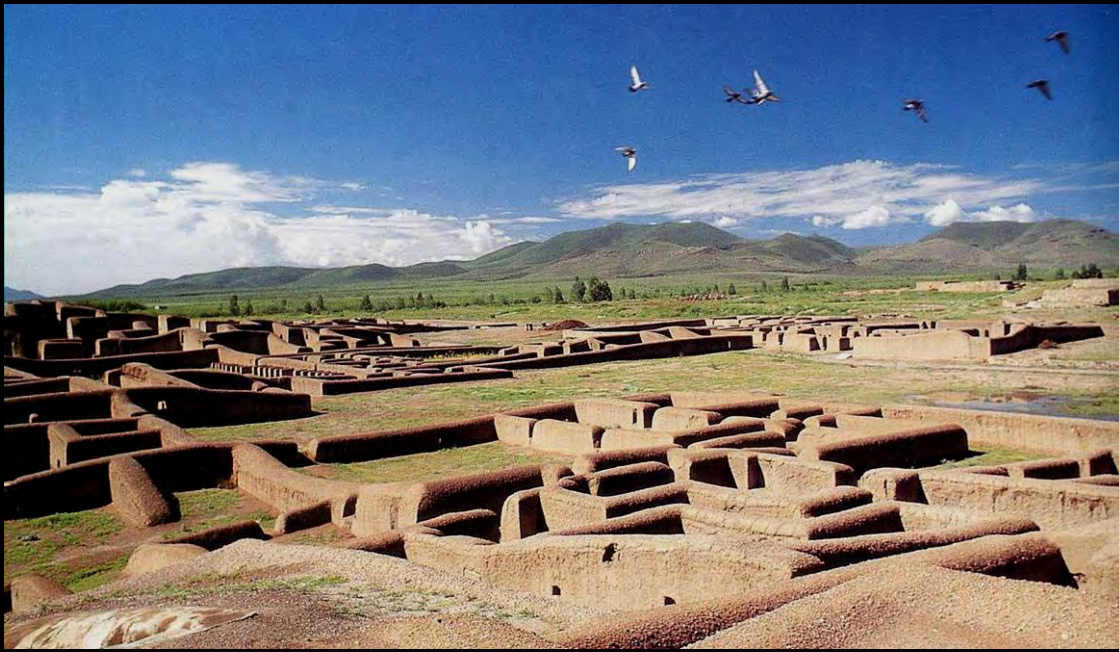




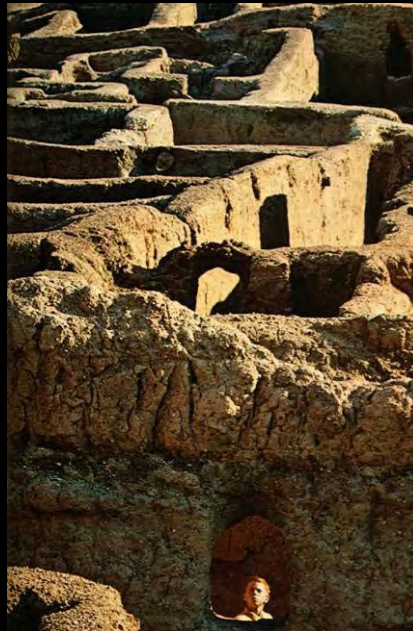




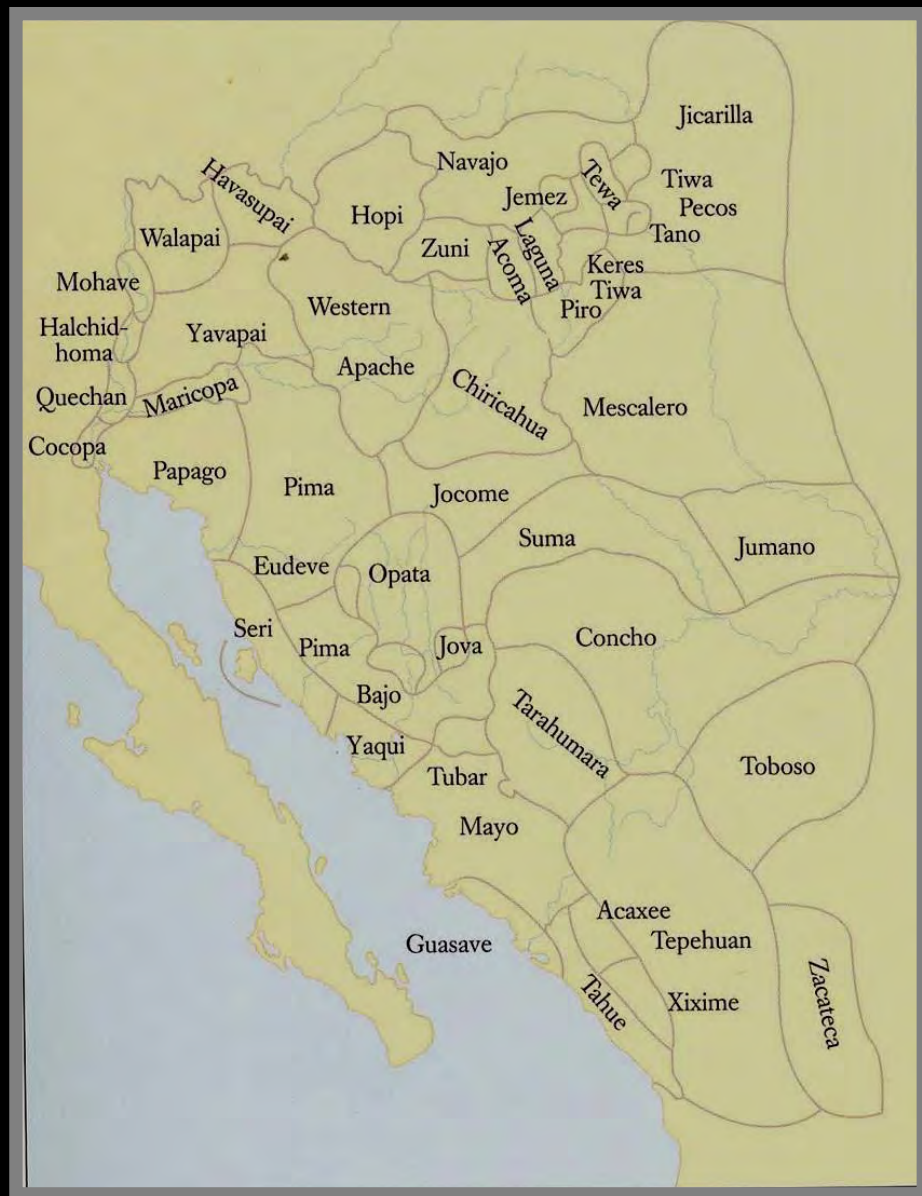
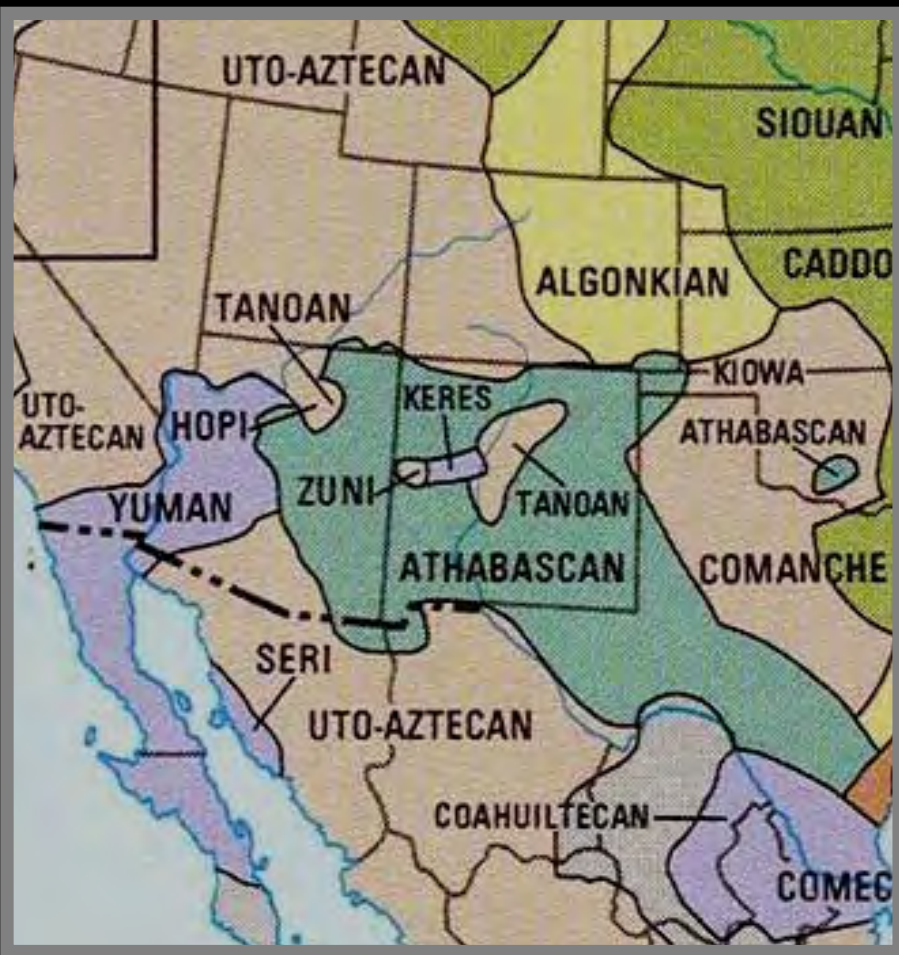




Paquimé, Chihuahua











Tano (Nuevo Mexico)



Navajo (Nuevo México)



Tiwa (Taos, Nuevo México)

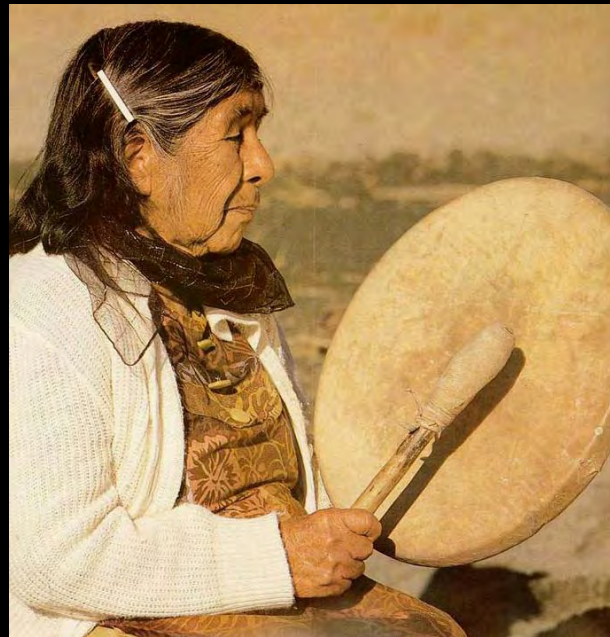


Pápago (Arizona)





Zuñi. Nuevo México

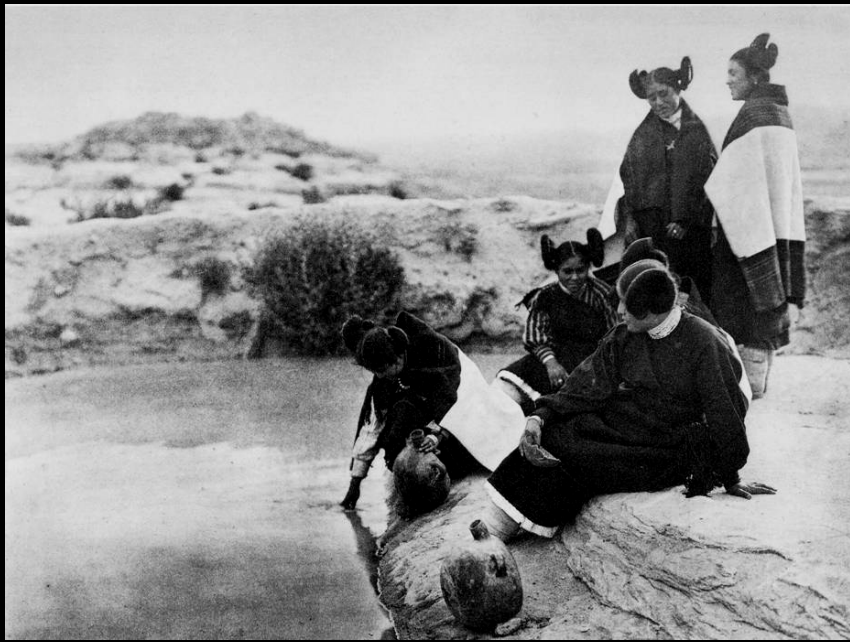


Paiute (Utah)

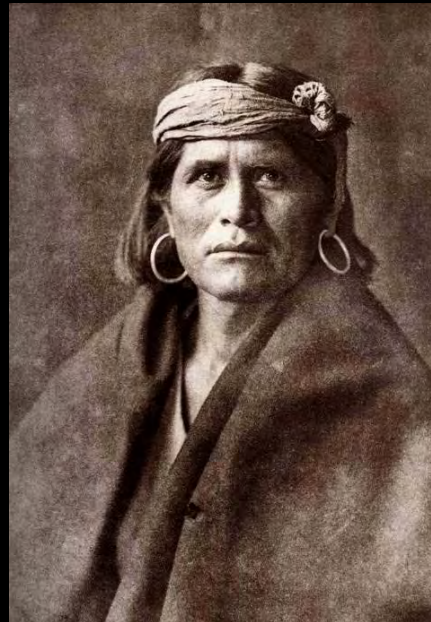


Tewa (Nuevo Mexico)





Hopi o Moki (Arizona)



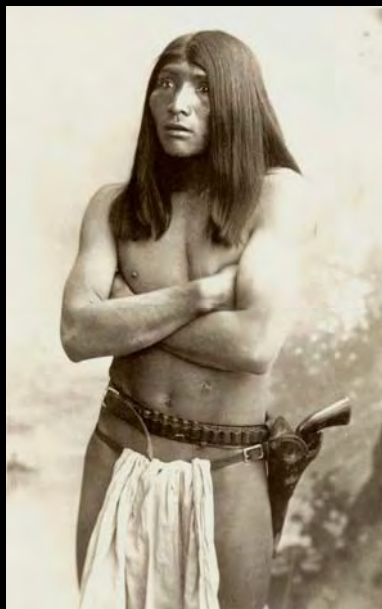




Navajos



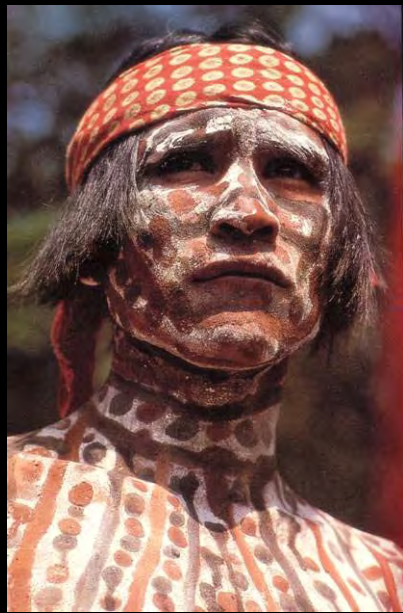




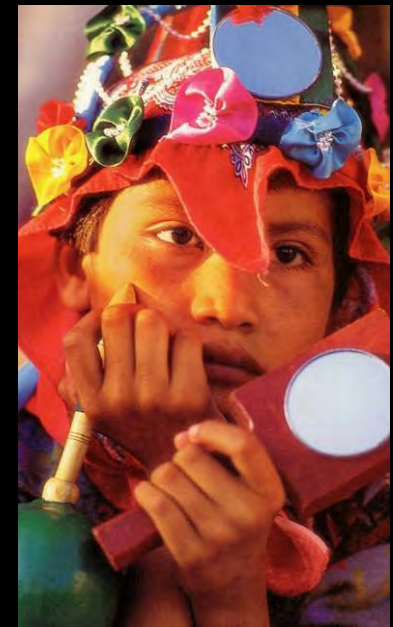
Apaches







Tarahumara o Raramuri (Chihuahua)



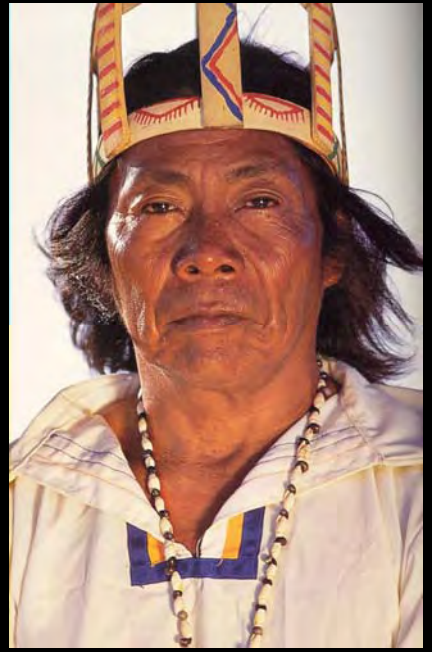
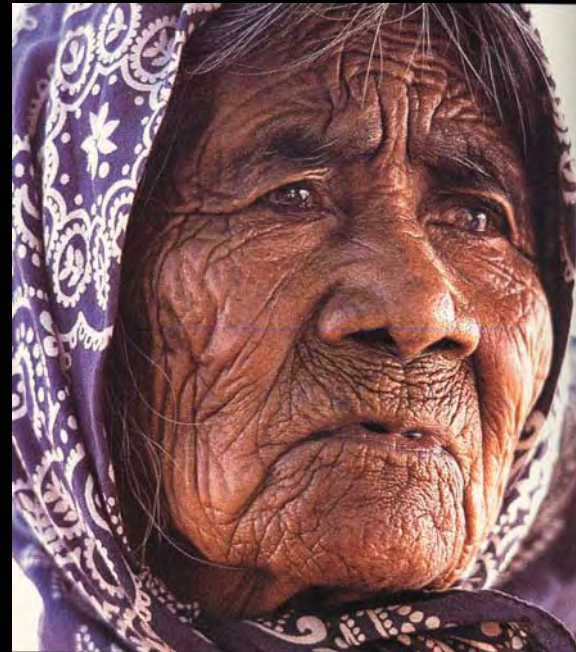
Yaqui (Sonora)

Mayo (Sonora)

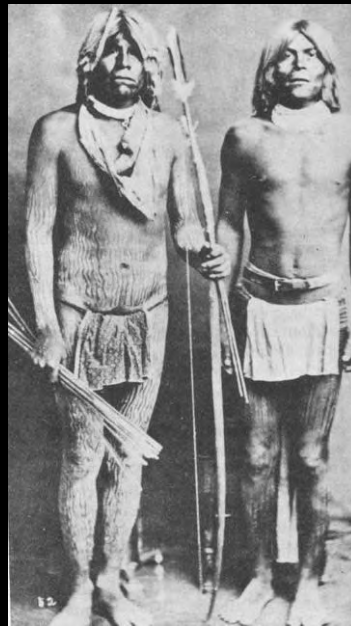
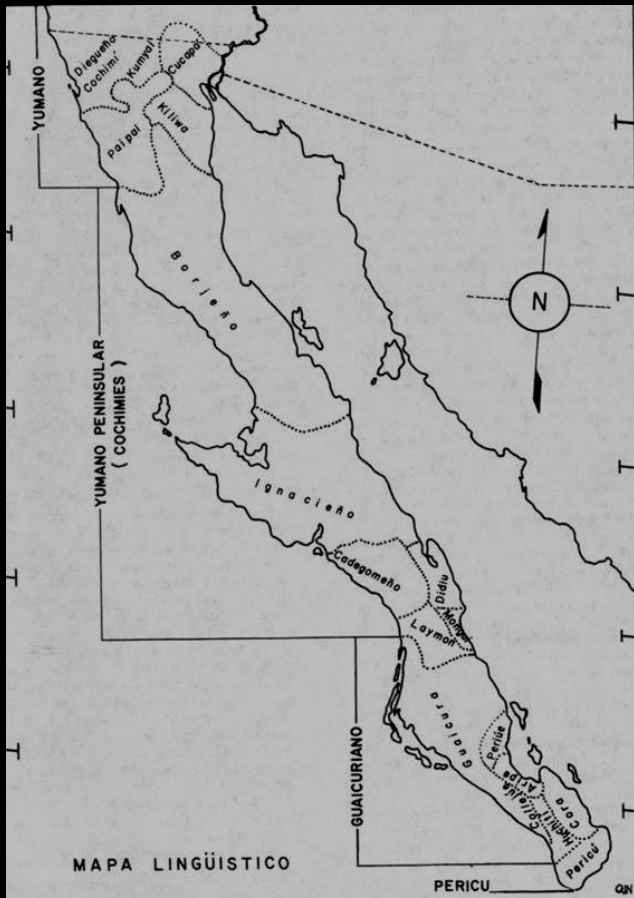




Seri  
(Sonora)







Cucapá



Paipai



Guaycuru



Kiliwa



Cochimí

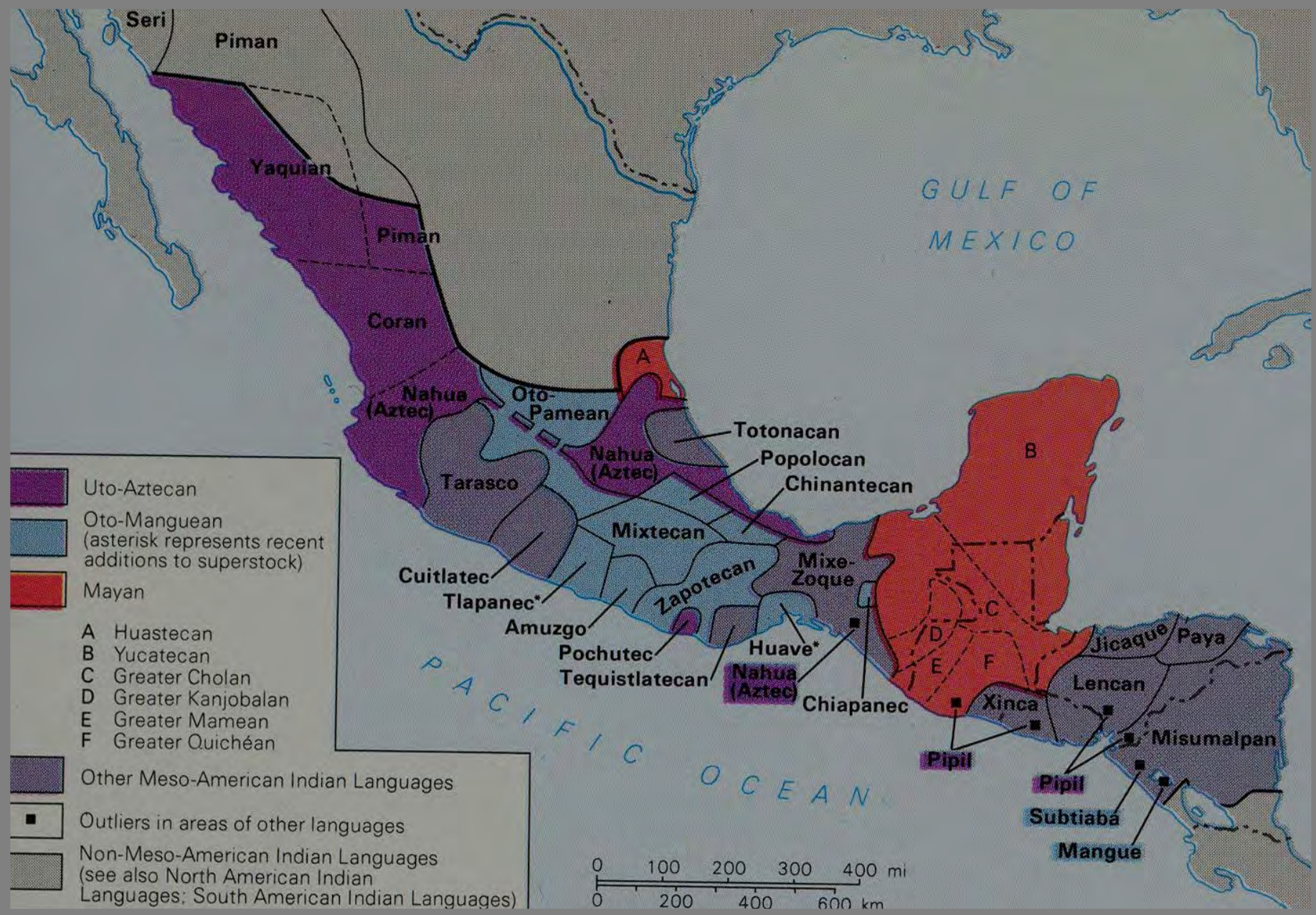




# REGIONES CULTURALES MESOAMERICANAS











Huichol



Cora



Tepehuan





## Náhuatl



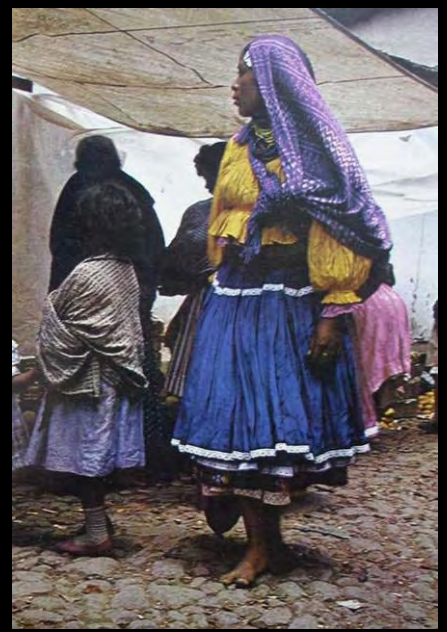




Pame



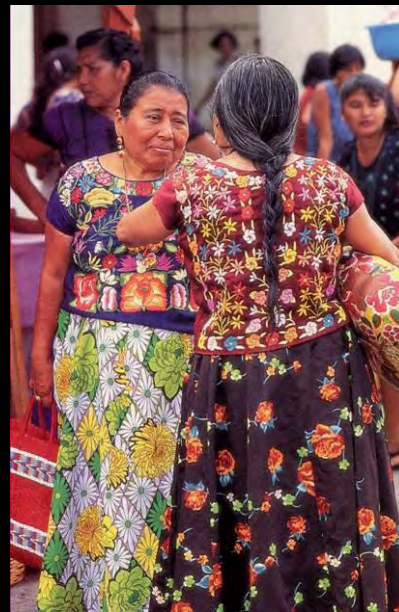
Mazahua



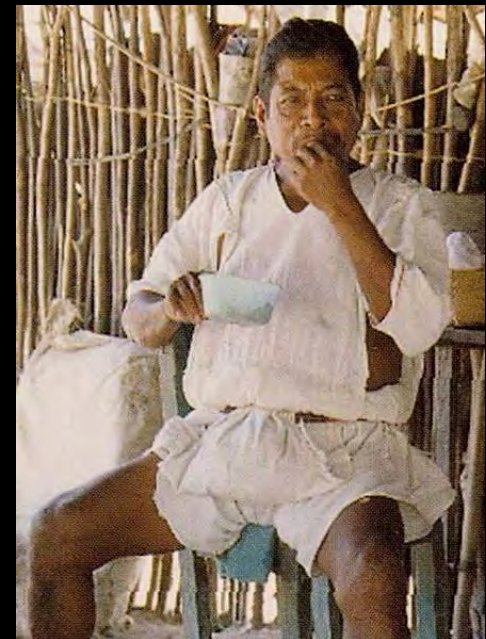
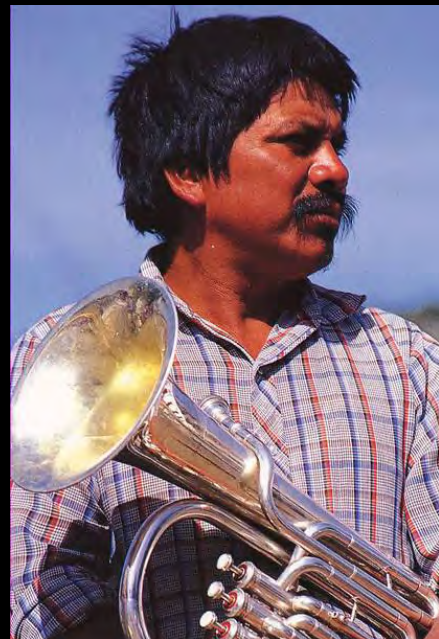
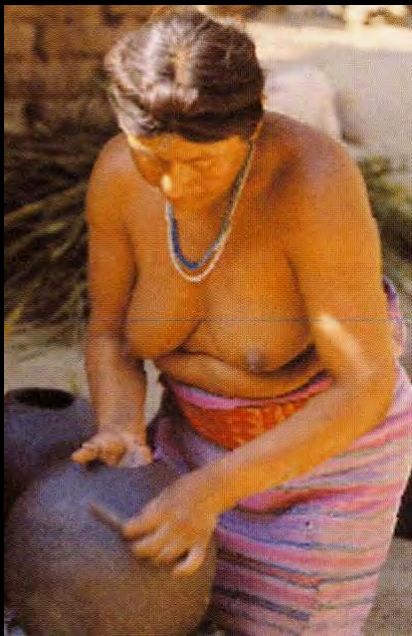
Otomí







Zapoteco (Oaxaca)



Mixteco (Oaxaca)





Triqui



Ixcateco



Chatino



Amuzgo



Popoloca



Cuicateco



Mazateco



Chinanteco

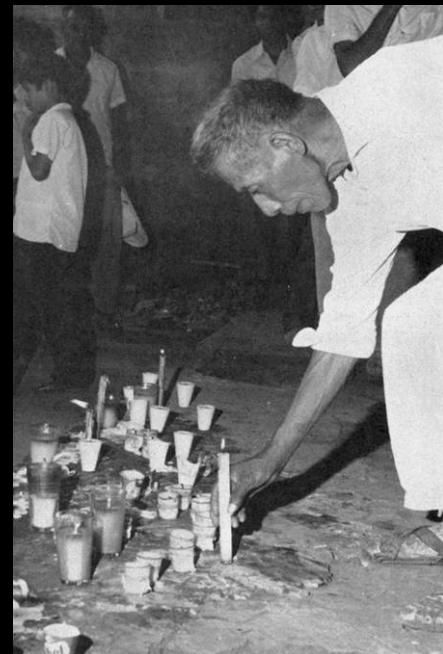




Mixe (Oaxaca)



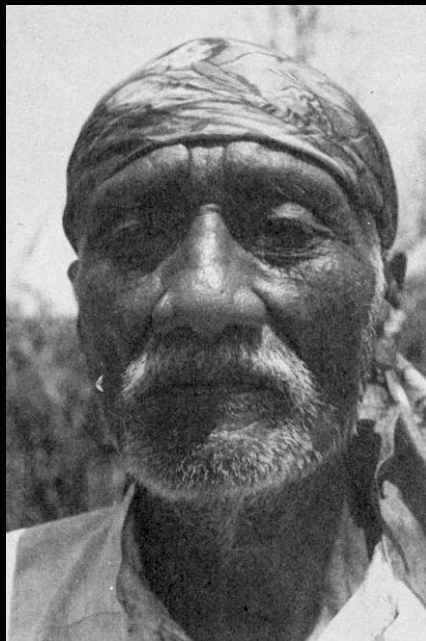




Popoluca (Veracruz)







Zoque (Chiapas)







Huasteco o Teenek



Chontal



Chol



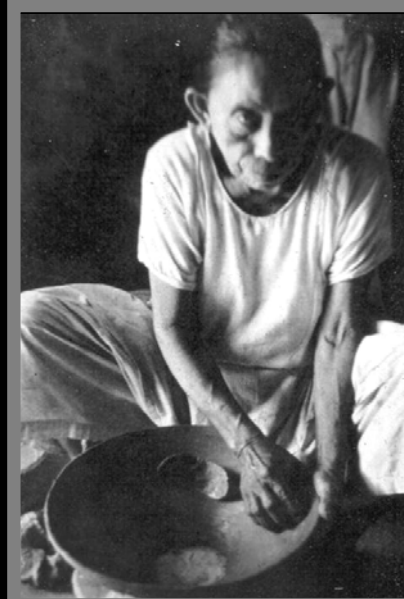
Chortí



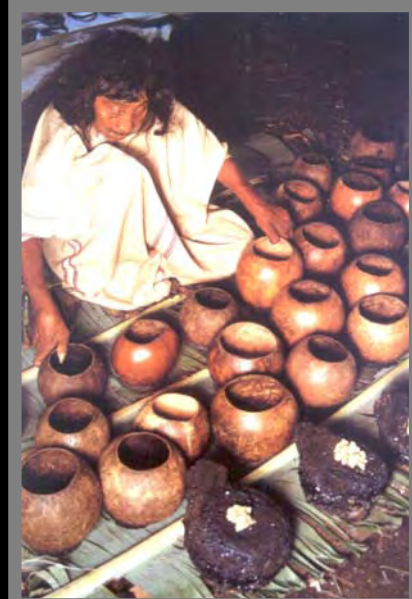
Yucateco



Mopán



Itzá



Lacandón





Tzeltal



Tzotzil



Tojolabal



Chuj



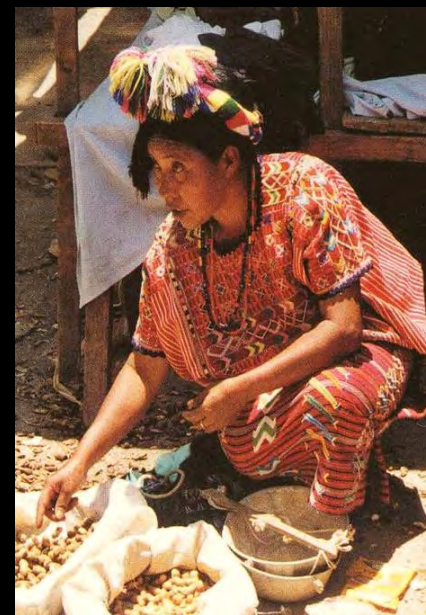
Motzintleco



Kanjolal

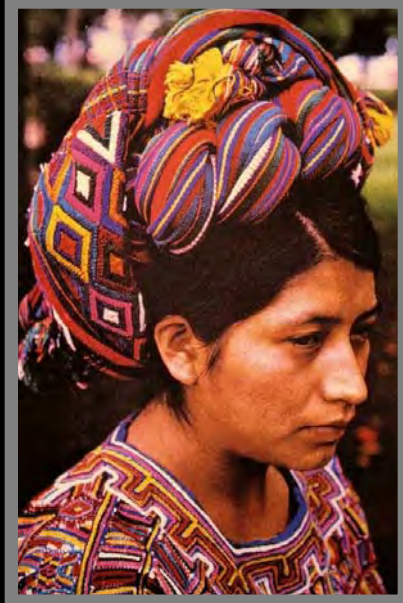


Aguacateco



Mam





Ixil



Quiché



Cakchiquel



Tzutuhil



Kekchí



Pocomam



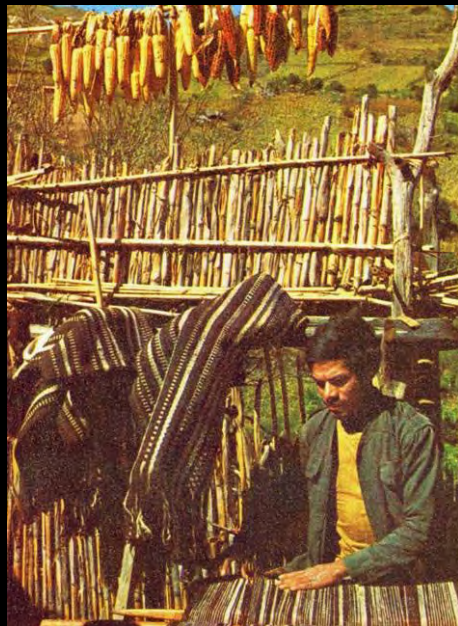
Pocomchí







Tarasco o Pourepecha



Tlapaneco



Chontal o Tequixtlalteca



Tepehua



Totonaco



Huave